

# 2024

## PRODUCT CATALOGUE

PRODUCT CATALOGUE 2024

The detail that will change your logistics

# TECHNICAL SUPPORT HIGH QUALITY PRODUCT CUSTOMIZATION



Visit our online store

[www.e-amtr.pl](http://www.e-amtr.pl)



## Table of contents

<b>About Us</b>	<b>3-8</b>
<b>Dock levellers</b>	<b>9-34</b>
AMTRK PRO swing lip dock leveller	11-16
AMTRV PRO telescopic dock leveller	17-22
AMTRV CD hydraulic loading dock with variable load capacity	23-28
AMTRV ESS dock with energy saving system	29-34
<b>Seals</b>	<b>35-40</b>
AMTR-U standard seals	37-38
AMTR P inflatable seals	39-40
<b>Loading platforms and dock</b>	<b>41-46</b>
AMTR I Loading platform mechanical bridge	43-44
AMTR J Loading plate mechanical bridge	45-46
<b>Loading houses</b>	<b>47-50</b>
AMTR D Modular loading houses	49-50
<b>Accessories for docks and loading houses</b>	<b>51-62</b>
Wheel Guides	53-54
Dock bumpers	55-57
Steel bollards	58-60
Wheel chocks	61-62
<b>Signaling and Docking System</b>	<b>63-69</b>
Dock lamps	65-66
Proximity Docking System	67-69

## ANALYSIS

A thorough analysis is paramount at every stage of communication with the customer. From the design process through production and implementation. Over the years we have gathered a group of professionals who take care of every detail of our solutions.

## MATERIALS

The materials we use for the manufacturing of our products are of the highest quality. We take great care in selecting components and semi-finished products to increase the service life of our solutions. All elements of our docks are manufactured in Poland and are subject to detailed inspection at every stage of the production process.

## TECHNOLOGY

The technology you can trust. We operate based on innovative solutions and proven standards. We have implemented ISO 9001:2015 Quality Management System in the company, ensuring effective procedures in all departments.

## DEVELOPMENT

Continuous development and sustainability. We use innovative solutions and continuous control of production processes to minimize the negative impact on the environment while intensifying business operations. We think today about what the customer and society will demand from our product tomorrow.





We are a team with many years of experience, which allows us to select the ideal product for a specific project. We provide our business partners with customized and detailed offers according to their specific requirements.

AMTR is a company that grew out of the need to create high-quality products from Polish components applying domestic technological thought. The main pillar of our business is the production of dock levellers, loading houses, and accessories, which are tailored to individual customer needs.

# Why AMTR

## Cooperation platform

On our website you can easily and quickly get acquainted with our products, send orders and check the current promotions.

## Technical Support

Our engineering department will customize the products for individual implementation and advise the best solutions taking into account the specific industry for which we produce.

## Efficient implementation

All components are manufactured in Poland, which guarantees efficient service and short lead times.

## Efficient implementation

We have implemented an effective system of production and logistics process control, so our customers can rest assured about the quality level of the products they receive.

## Sales promotion materials

We provide our Business Partners a full photo database of offered products, information and technical folders.

## Marketing support

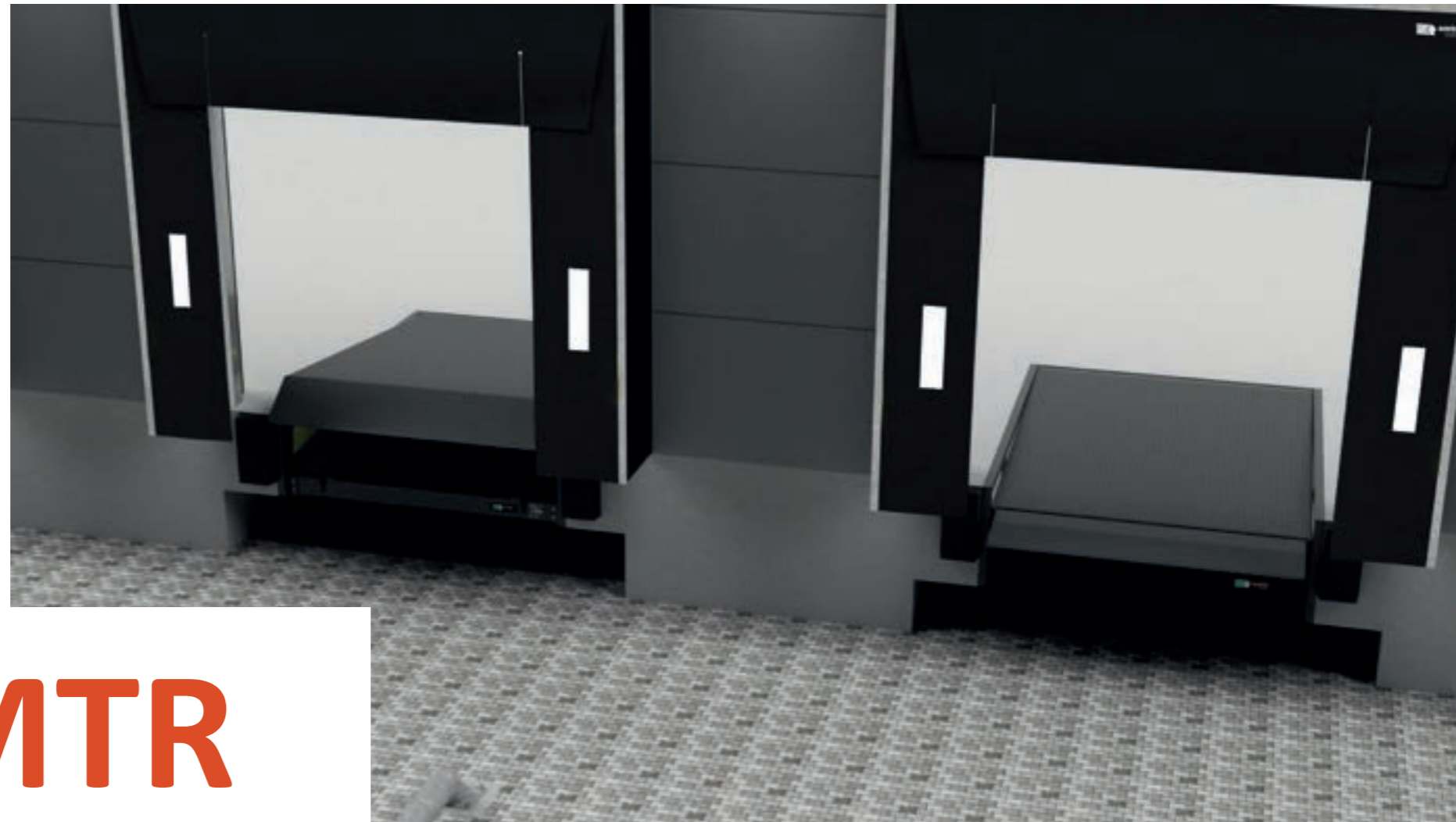
We help our business partners with promotional activities we prepare advertising campaigns, descriptions on websites and keep them up to date with the latest.

## Full documentation

The products coming out of our production plant are CE certified and issued documents confirming their high level of workmanship.

## Guarantee of the highest quality

The ISO 9001 certification in accordance with the PN EN ISO 9001:2015 standard guarantees high production standards and products of the highest quality.



- The highest level
- Attention to detail
- Safety

# AMTR

Dock levellers  
with swing or  
telescopic lip



# AMTRK-PRO

Swing lip dock leveller



More information on the product

## Purpose

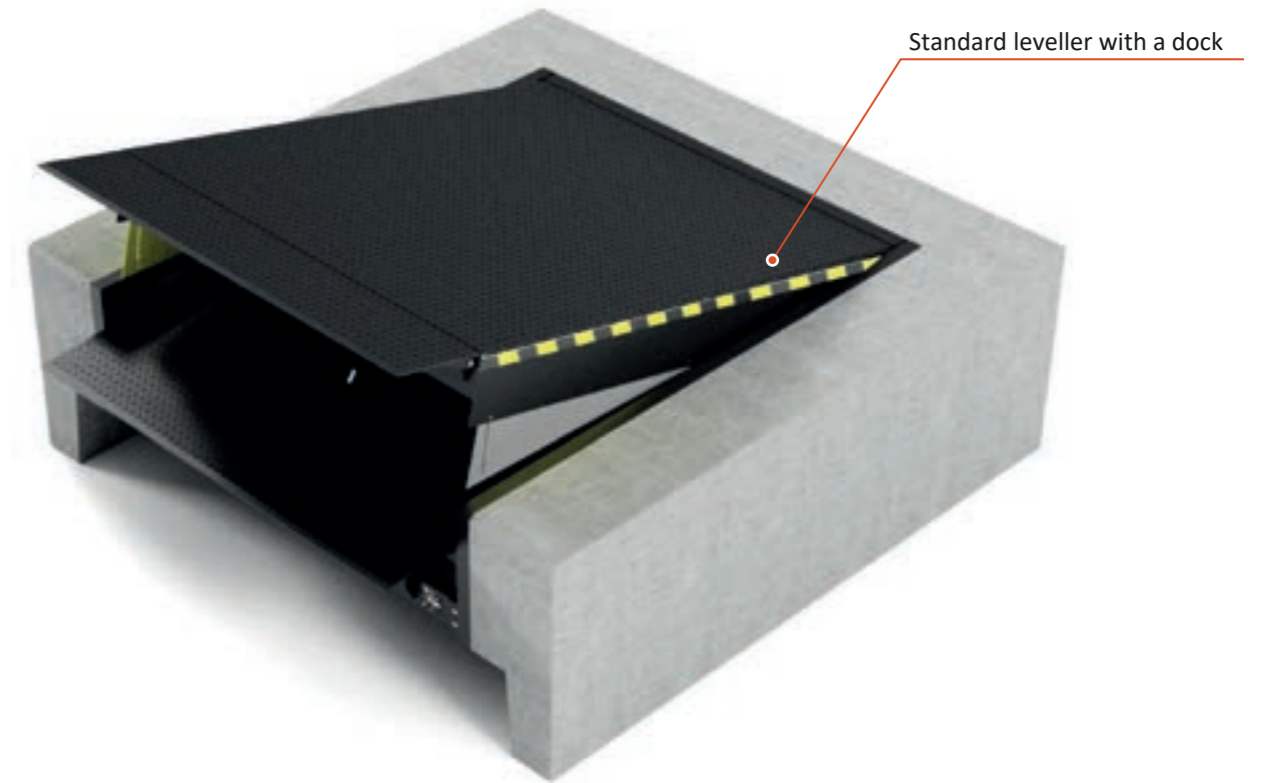
A dock with a swing lip is designed for pallet operations with a forklift for trailer trucks. The dock is equipped with a stable hinged lid, which ensures fast and safe operation. The dock is CE certified. The platform is made of rifled steel sheet of 6/8 mm thickness. It was integrated into the service support and connected to the ramp frame at the rear with hinges. An anti-slip surface and foot protection along the entire length of the platform ensures the user's full safety. There are several possible ways of embedding the platforms in the foundation.



## Standard technical parameters\*

Use	Loading systems
Nominal lengths	2000, <b>2500</b> , 3000, 3500 mm
Nominal widths	<b>2000</b> , 2250 mm
Construction heights	610 mm
Nominal lip lengths	<b>400</b> , 500 mm
Sheet metal thickness	6/8 mm
Nominal load capacity	<b>6</b> , 10, 12 ton ( <b>60</b> , 100, 120 kN)
Standard color	RAL 9005 two component resin-based paint

\*The product may be adapted according to customer requirements



### Operating range (acc. to EN 1398)

	AMTRK-PRO			
	2000	2500	3000	3500
Nominal length	2000	2500	3000	3500
Working range up	225	290	350	410
Working range down	330	350	340	335

## Types of lips

The AMTRK-PRO dock leveller lip is made of high quality, 12 mm thick riffled sheet metal and has a reliable hinge system that works even when heavily soiled. In addition, the lip has a 40 mm chamfer which prevents damage to the wheels of loading devices.

### Straight lip

This standard version is designed to fit most types of vehicles with the most common sizes.

#### Product Features:

- ▶ slip protection,
- ▶ improved forklift traction,
- ▶ ergonomic and safe loading process.



### Bevelled lip

The symmetrically cut lip facilitates loading and reduces the risk of damage to the docked vehicle.



### Divided lip

This solution consists of the main part and two edge segments with a maximum width of 250 mm.



## Control

- ▶ the actuator system of the leveller consists of a set of cylinders for lifting the platform and swinging the lip,
- ▶ the lip is lifted with a separate actuator, separately powered from the hydraulic unit,
- ▶ closed hydraulic system,
- ▶ stepless adjustment to the vehicle height during loading,
- ▶ standard one-button control (optional automatic or gate-dock), protection in the event of power failure or use of the emergency switch, protection in the event of a power failure or the use of an emergency switch, the leveller is protected against descending, it will stop and maintain its current position,
- ▶ it is possible to couple the leveller control system with the door control system.

Tank capacity	5 dm <sup>3</sup>
Working pressure	130 bar
Motor power	1,1 kW
Supply voltage	400 VAC
Control voltage	24 V DC
Protection type	IP54
Working medium	Mobil DTE 10 Excel 15

### AMTRK-PRO control

#### SL100

standard



#### Optional options:

- ▶ Auto return
- ▶ Gate control
- ▶ UP control

## Standard equipment

- ▶ electrical system,
- ▶ hydraulic system,
- ▶ control box,
- ▶ triple divided lip,
- ▶ platform painted RAL 9005,
- ▶ CE conformity declaration.

## Additional options

- ▶ loading ramp made in other dimensions and capacities,
- ▶ 500 mm long swing lip,
- ▶ an additional anti-slip layer for the leveller's driving surfaces,
- ▶ leveller structural elements painted in any RAL color or hot-dip galvanized,
- ▶ leveller structure and all hydraulic elements made of acid-resistant steel,
- ▶ the shape of the swinging lip different from standard,
- ▶ normal or reinforced impact-absorbing buffers,
- ▶ leveller in thermally insulated version,
- ▶ sealing in the case of an opening under the vehicle's tail lift,
- ▶ powder coating.

## Safety devices

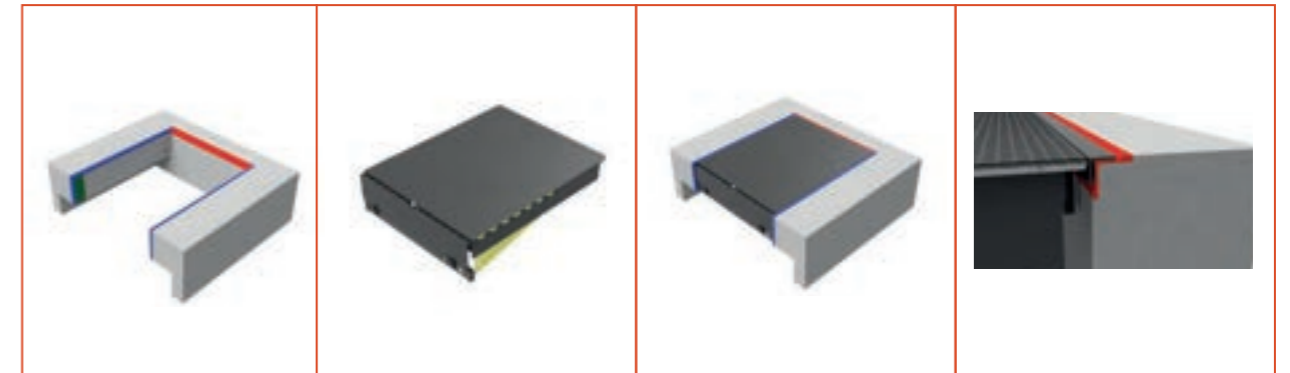
- ▶ protection in case of power failure or use of the emergency stop (will stop in the current position), black and yellow side marking of dangerous places,
- ▶ foot protection along the entire length of the platform.

## Dock frame system

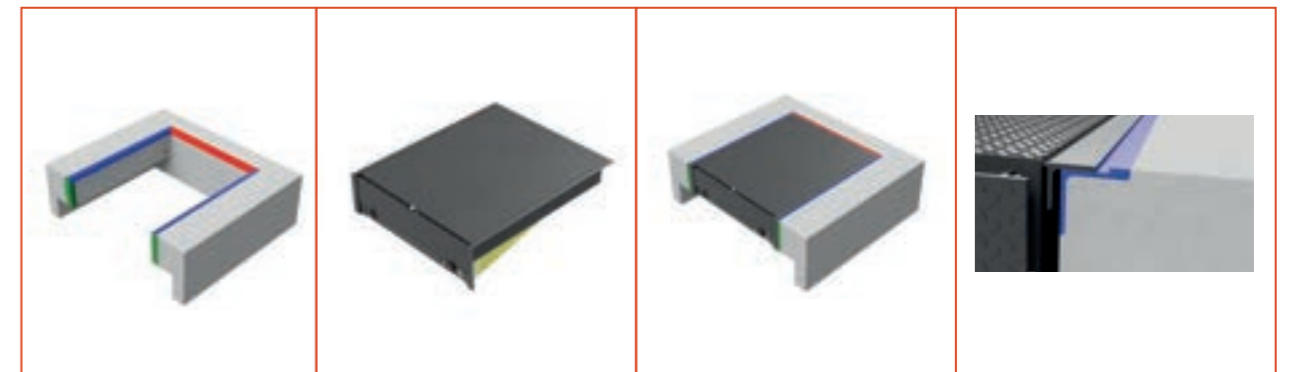
The main function of the dock frame is to connect the Frame before concreting platform to the dock. The dock frame is directly cast in concrete.

## Dock pans (leveller installation)

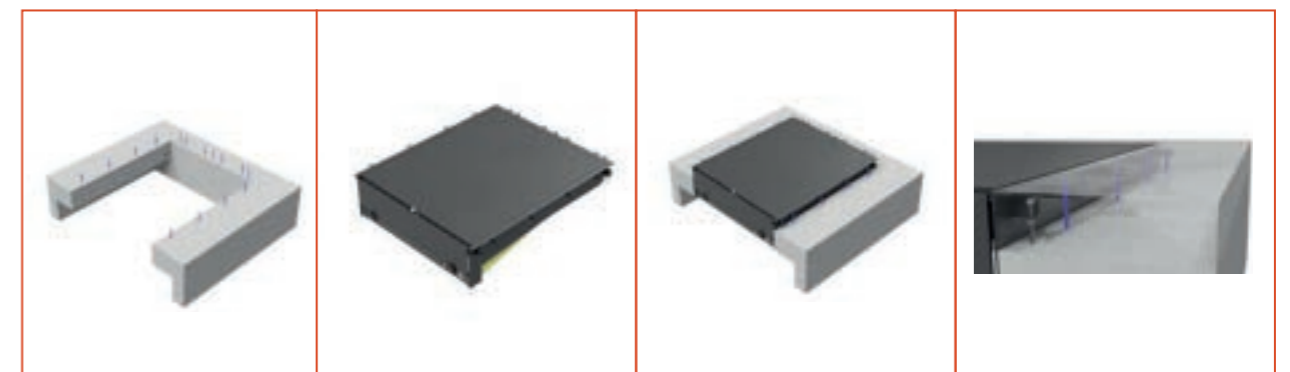
### Standard



### Frame



### Frame before concreting



# AMTRV-PRO

Telescopic dock leveller



More information on the product

## Purpose

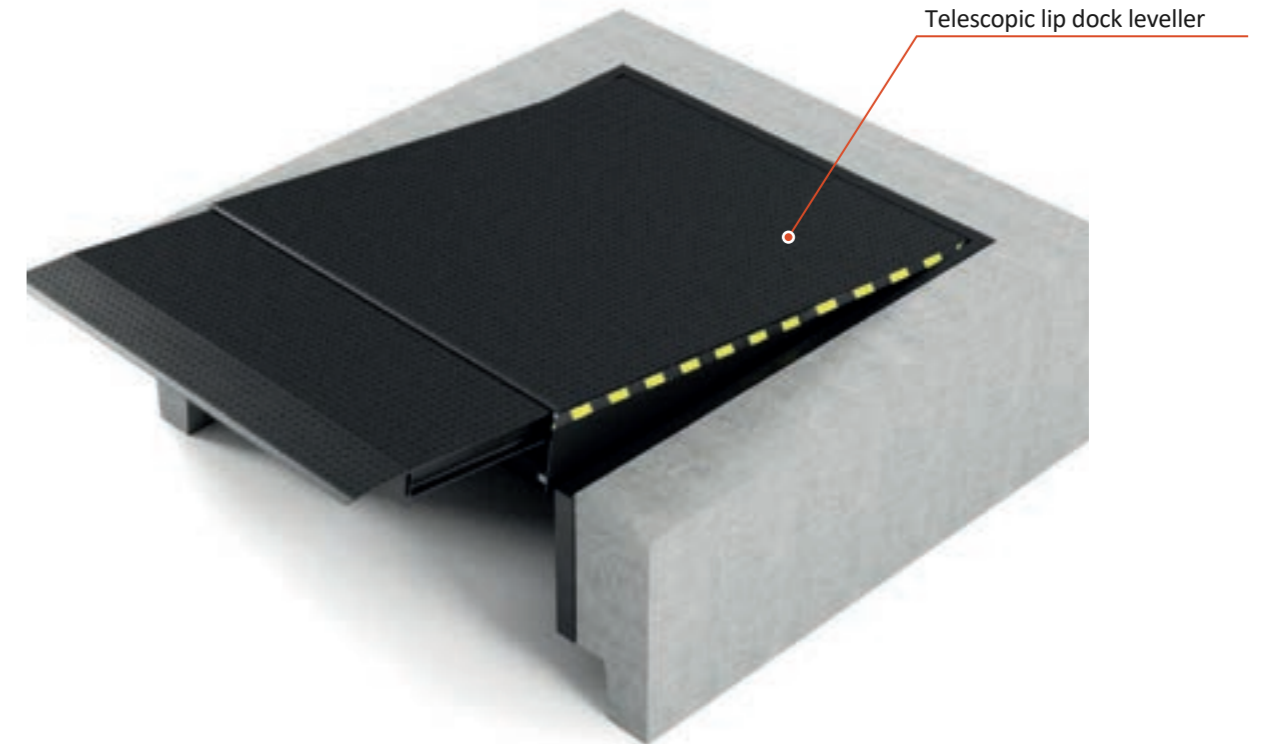
The telescopic lip dock leveller is designed for loading/unloading pallets with a forklift on trailer trucks. Its characteristics feature is a retractable lip guided on bearing rollers. The dock is CE certified. The platform is made of rifled steel sheet of 8/10 mm thickness. It is integrated with the service support and connected to the back of the leveller frame with hinges. An anti slips surface and foot protection along the entire length of the platform ensures user's full safety. Different methods of placing bridges in the foundation are possible.



## Standard technical parameters\*

Application	Loading systems
Nominal lengths	2000, <b>2500</b> , 3000, 3500, mm
Nominal widths	<b>2000</b> , 2250 mm
Construction heights	710 mm
Nominal lip lengths	<b>500</b> , 1000 mm
Sheet metal thickness	8/10 mm
Nominal load capacity	<b>6</b> , 10, 12 ton ( <b>60</b> , 100, 120 kN)
Standard color	RAL 9005 two component resin-based paint

\*The product may be adapted according to customer requirements



### Operating range (acc. to PN EN 1398)

	AMTRV-PRO (J500)				AMTRV-PRO (J1000)			
	2000	2500	3000	3500	2000	2500	3000	3500
Nominal length	2000	2500	3000	3500	2000	2500	3000	3500
Working range up	250	280	235	210	-	335	275	245
Working range down	345	410	390	365	-	470	440	405

## Types of telescopic lips

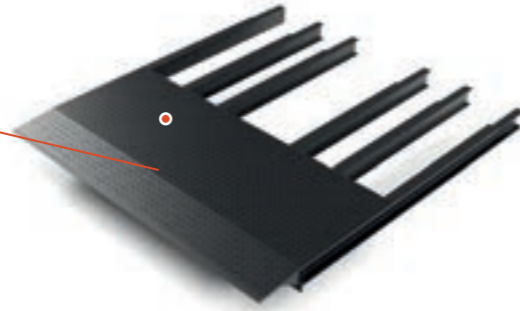
The AMTRV PRO platform lip is made of high quality 12 mm thick riffled steel sheet, equipped with a robust, reliable and maintenance free extending mechanism. In addition, the lip is beveled by 40 mm to prevent damage to the wheels of the loading equipment.

### Straight lip

This standard version is designed to fit most types of vehicles with the most common sizes.

Product features:

- ▶ slip protection,
- ▶ improved forklift traction,
- ▶ ergonomic and safe loading process.



### Bevelled lip

The symmetrically cut lip facilitates loading and reduces the risk of damage to the docked vehicle.



## Control

- ▶ the actuator system of the leveller consists of a set of cylinders for lifting the platform and extending the lip,
- ▶ the lip is extended with a separate actuator,
- ▶ separately powered from the hydraulic unit,
- ▶ closed hydraulic system,
- ▶ stepless adjustment to the vehicle height during loading, one-button control,
- ▶ protection in case of power failure or pressing of the emergency button, the platform is protected against dropping down and will stop in its current position,
- ▶ it is possible to couple the leveller control system with the door control system.

Application	5 dm3
Nominal lengths	150 bar
Nominal widths	1,5 kW
Construction heights	400 VAC
Nominal lip lengths	24 V DC
Sheet metal	IP54
thickness Nominal	Mobil DTE 10 Excel 15

## AMTRV-PRO CONTROL

### TL201

auto-return



Optional features:

- ▶ Gate control
- ▶ UP control

## Standard equipment

- ▶ electrical system,
- ▶ hydraulic system,
- ▶ control box,
- ▶ telescopic lip in straight version,
- ▶ platform painted RAL 9005,
- ▶ CE conformity declaration.

## Additional options

- ▶ loading ramp made in other dimensions and capacities,
- ▶ 500 mm long swing lip,
- ▶ an additional anti-slip layer for the leveller's driving surfaces,
- ▶ leveller structural elements painted in any RAL color or hot-dip galvanized,
- ▶ leveller structure and all hydraulic elements made of acid-resistant steel,
- ▶ the shape of the swinging lip different from standard,
- ▶ normal or reinforced impact-absorbing buffers,
- ▶ leveller in thermally insulated version,
- ▶ sealing in the case of an opening under the vehicle's tail lift,
- ▶ powder coating.

## Safety devices

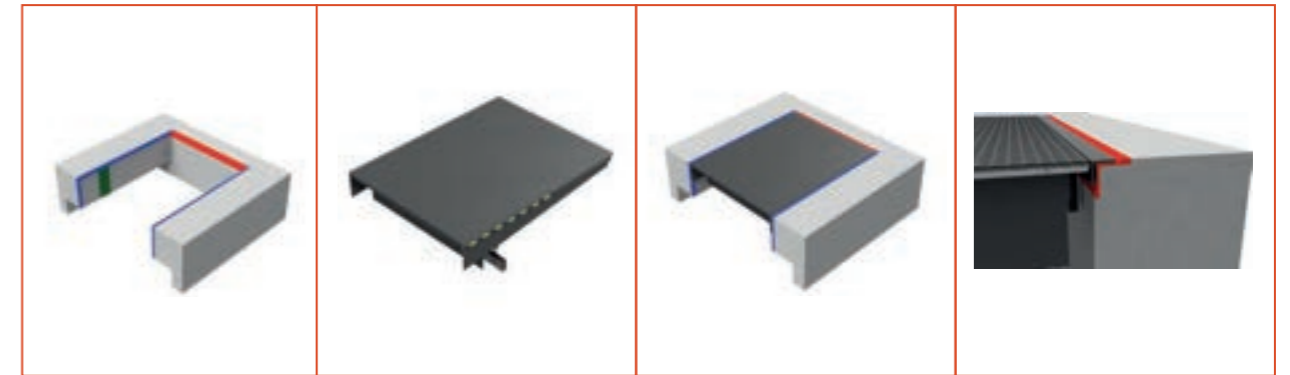
- ▶ protection in case of power failure or pressing of the emergency button (the platform will stop in its current position),
- ▶ black and yellow side marking of dangerous places, foot protection along the entire length of the platform.

## Dock frame system

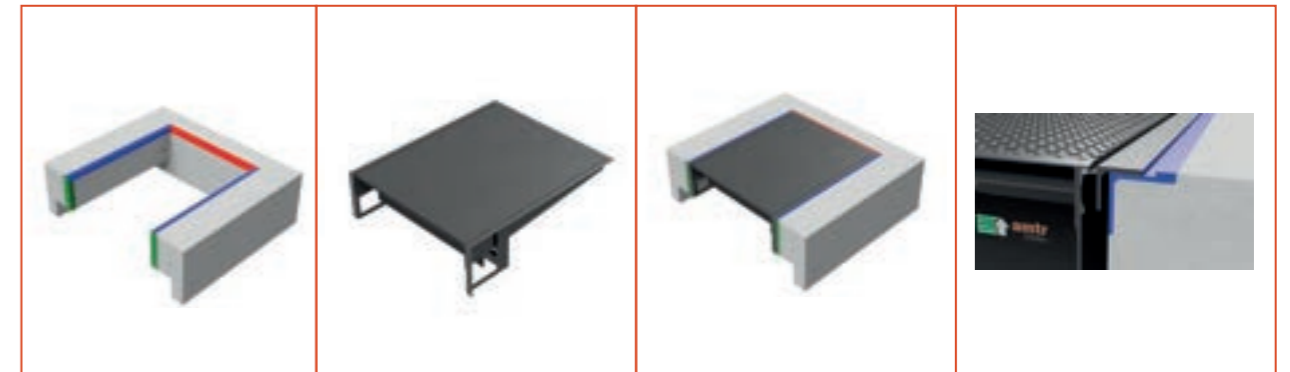
The main function of the dock frame is to connect the platform to the dock. The dock frame is directly cast in concrete.

## Dock pans (leveller installation)

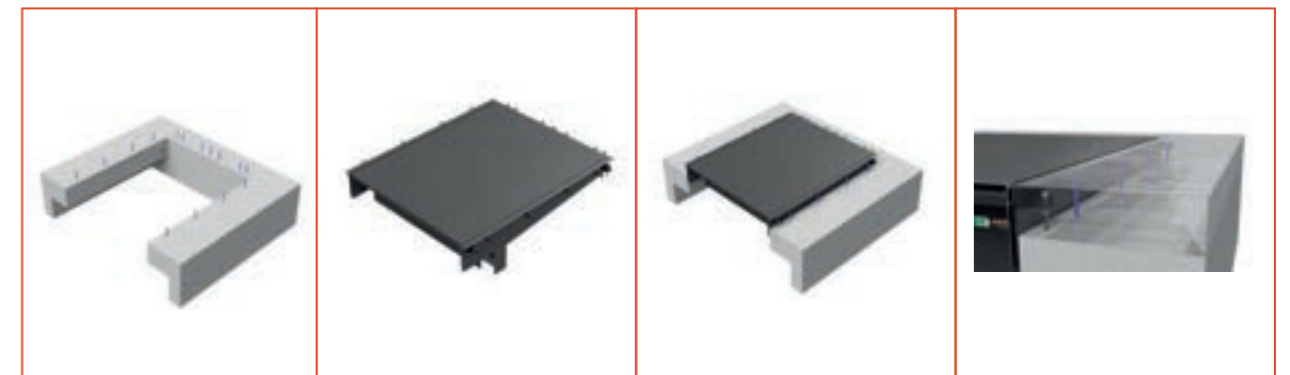
### Standard



### Frame



### Frame before concreting



# AMTRV-CD

Hydraulic loading platform with variable load capacity



More information on the product

## Purpose

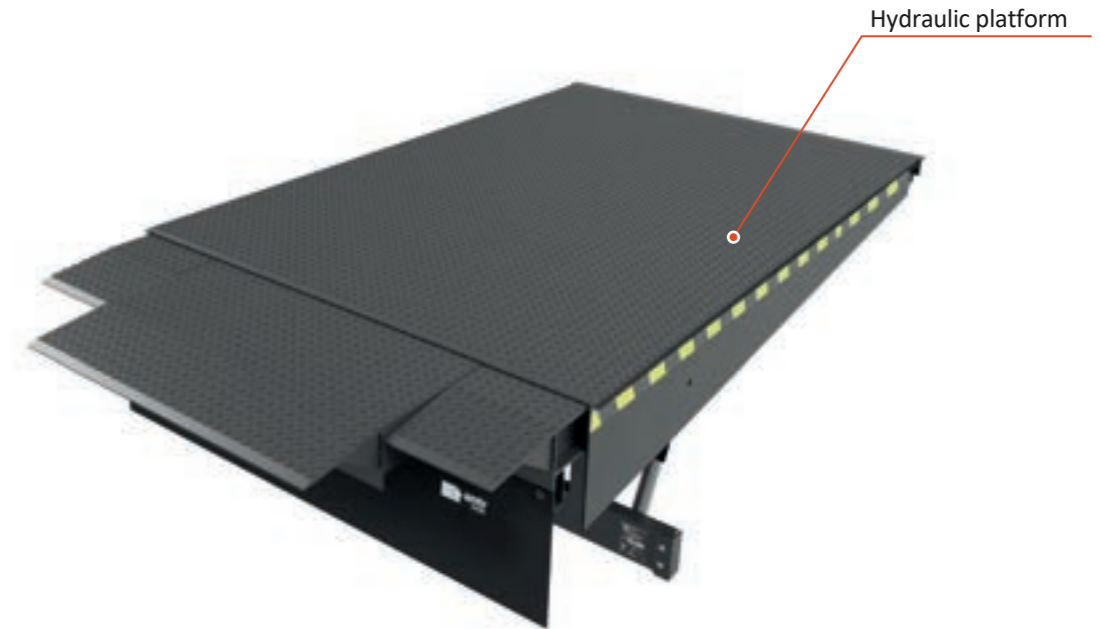
The function of the hydraulic dock leveller is to connect the building to the vehicle trailer by bridging the difference in level between the two. The CD system is equipped with a telescoping, divided lip. Such a lip is designed to handle a wide range of vehicles, differing in design and dimensions of the cargo area. Using the switch on the control panel, the operator selects the type of vehicle and the appropriate platform mode. For vans (with smaller width of the loading area) the telescopic lip is reduced to 1200mm. The load capacity in this case equals 20 kN. When the full width of the extension is in use, the load capacity of the platform is 60 kN.



## Standard technical parameters\*

Application	Loading systems
Nominal lengths	3000, mm
Nominal widths	2000 mm
Construction heights	800 mm
Nominal lip lengths	1000 mm
Sheet metal thickness	8/10 mm
Load capacity	2/6 tons (20/60 kN)
Standard colors	RAL 9005 two-component resin-based paint

\*The product may be adapted according to customer requirements. The maximum platform inclination according to EN 1398 is 12.5%.



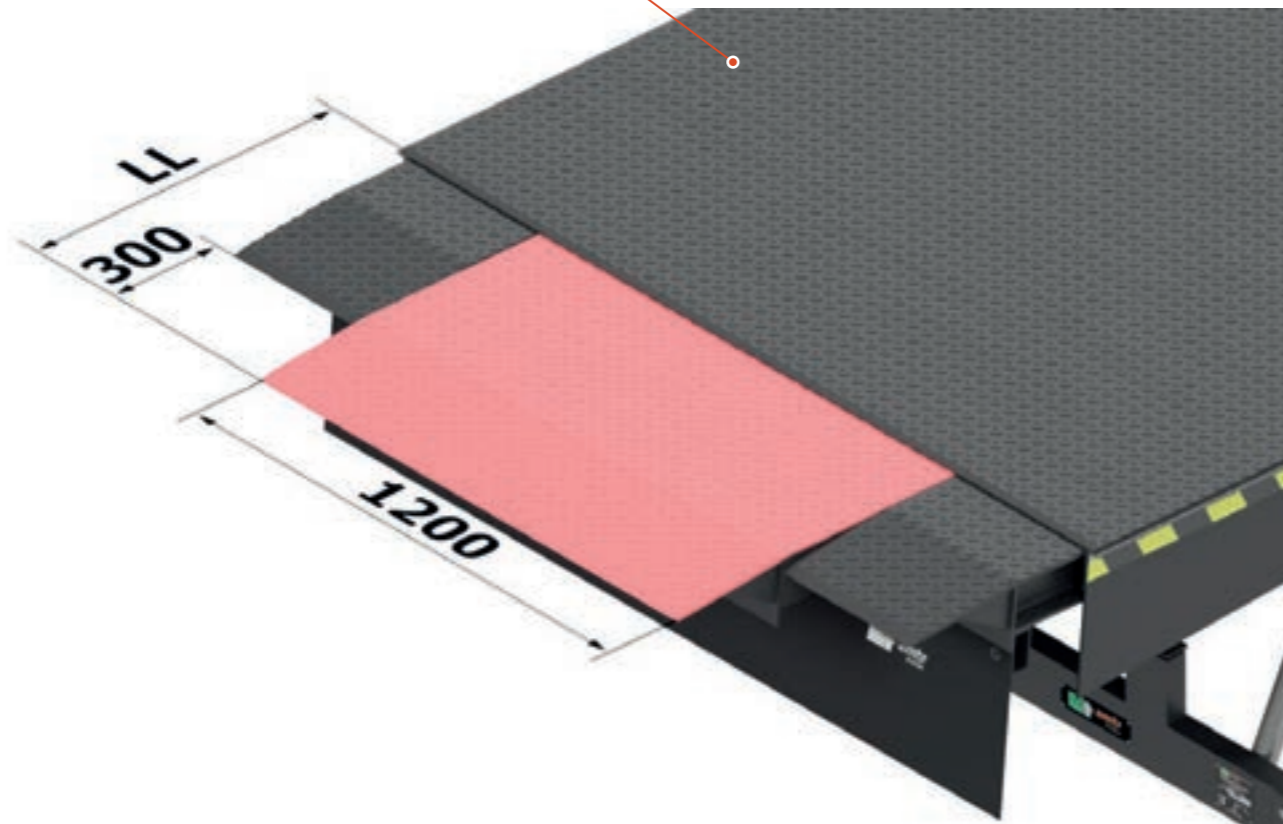
### Operating range (acc. to PN EN 1398)

	AMTRV-CD
Nominal length	3000
Construction height	800
Working range up	415
Working range down	530

## Types of lips

The AMTRV CD dock leveller telescopic lip is made of high quality riffled sheet metal 12 mm (12/14) thick and is equipped with a special, durable, dirt resistant, and maintenance free extension mechanism. A system of straight, high durability slides ensures its quiet and trouble free operation. The AMTRV-CD leveller lip has a segmented design, allowing it to operate with vehicles of different types, depending on the mode of operation selected.

### Telescopic lip



## Control

- ▶ the actuator system consists of a set of cylinders that allows independent extension of the middle section of the lip,
- ▶ the lip is extended with a separate actuator,
- ▶ separately powered from the hydraulic unit,
- ▶ stepless adjustment to vehicle height during loading,
- ▶ four - button control with AMTRV - CD,
- ▶ intuitive control with the compulsory section of 20 kN or 60 kN operating mode and a button for auto - return,
- ▶ it is possible to couple the ramp control to the door control,
- ▶ protection in case of power failure or pressing of the emergency button (the platform will stop in its current position).

Tank capacity	7 dm <sup>3</sup>
Working pressure	150 bar
Engine power	1,5 kW
Supply voltage	400 VAC
Control voltage	24 V DC
Protection type	IP54
Working medium	Mobil DTE 10 Excel 15

### AMTRV-CD CONTROL

#### TL401

auto-return



#### Optional features:

- ▶ Gate control
- ▶ UP control

## Standard equipment

- ▶ electrical system,
- ▶ hydraulic system,
- ▶ control box,
- ▶ triple divided lip,
- ▶ platform painted RAL 9005,
- ▶ CE conformity declaration.

## Additional options

- ▶ loading platform made in different dimensions,
- ▶ additional anti-slip layer of ramp driving elements,
- ▶ leveller structural elements painted in any RAL color or hot-dip galvanized,
- ▶ powder coating.

## Safety devices

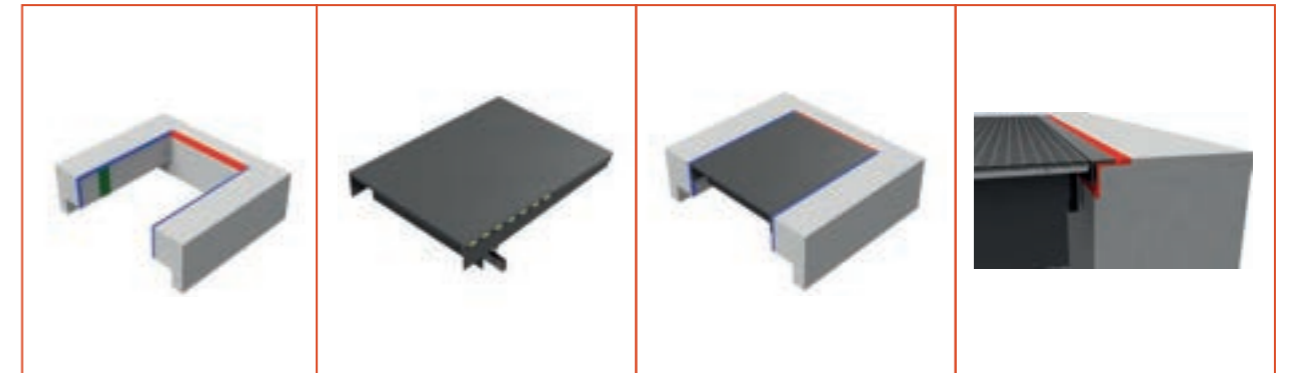
- ▶ protection in case of power failure or pressing of the emergency button (platform will stop in its current position),
- ▶ black and yellow side marking of dangerous places,
- ▶ foot protection along the entire length of the platform.

## Dock frame system

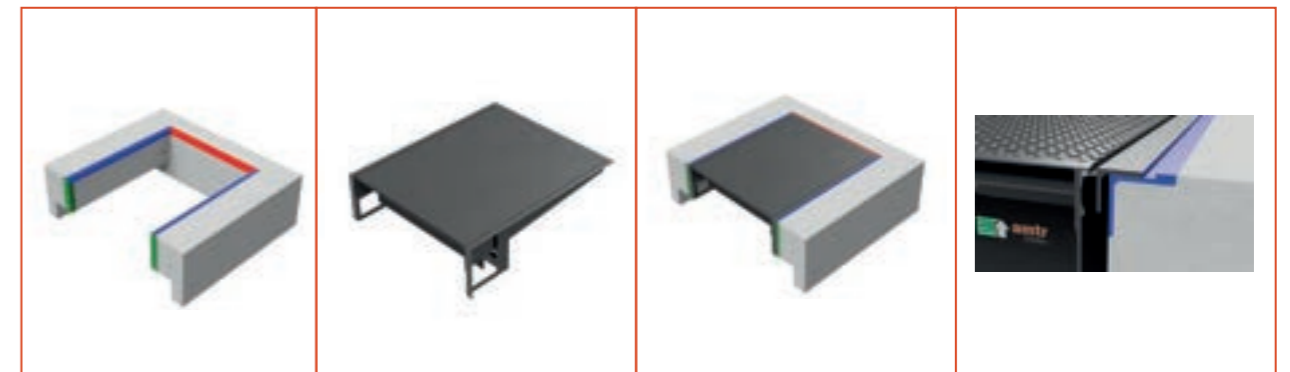
The main function of the dock frame is to connect the platform to the dock. The dock frame is directly cast in concrete.

## Dock pans (leveller installation)

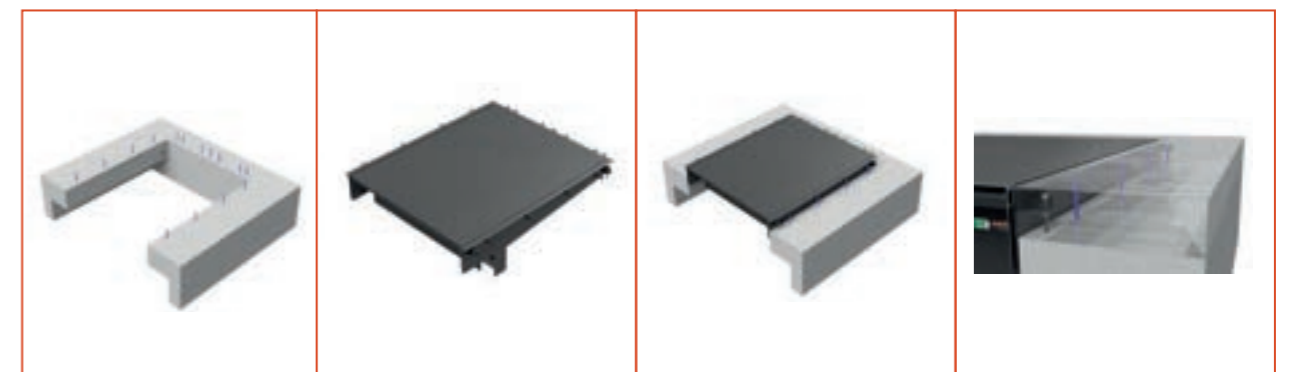
### Standard



### Frame



### Frame before concreting



# AMTRV-ESS

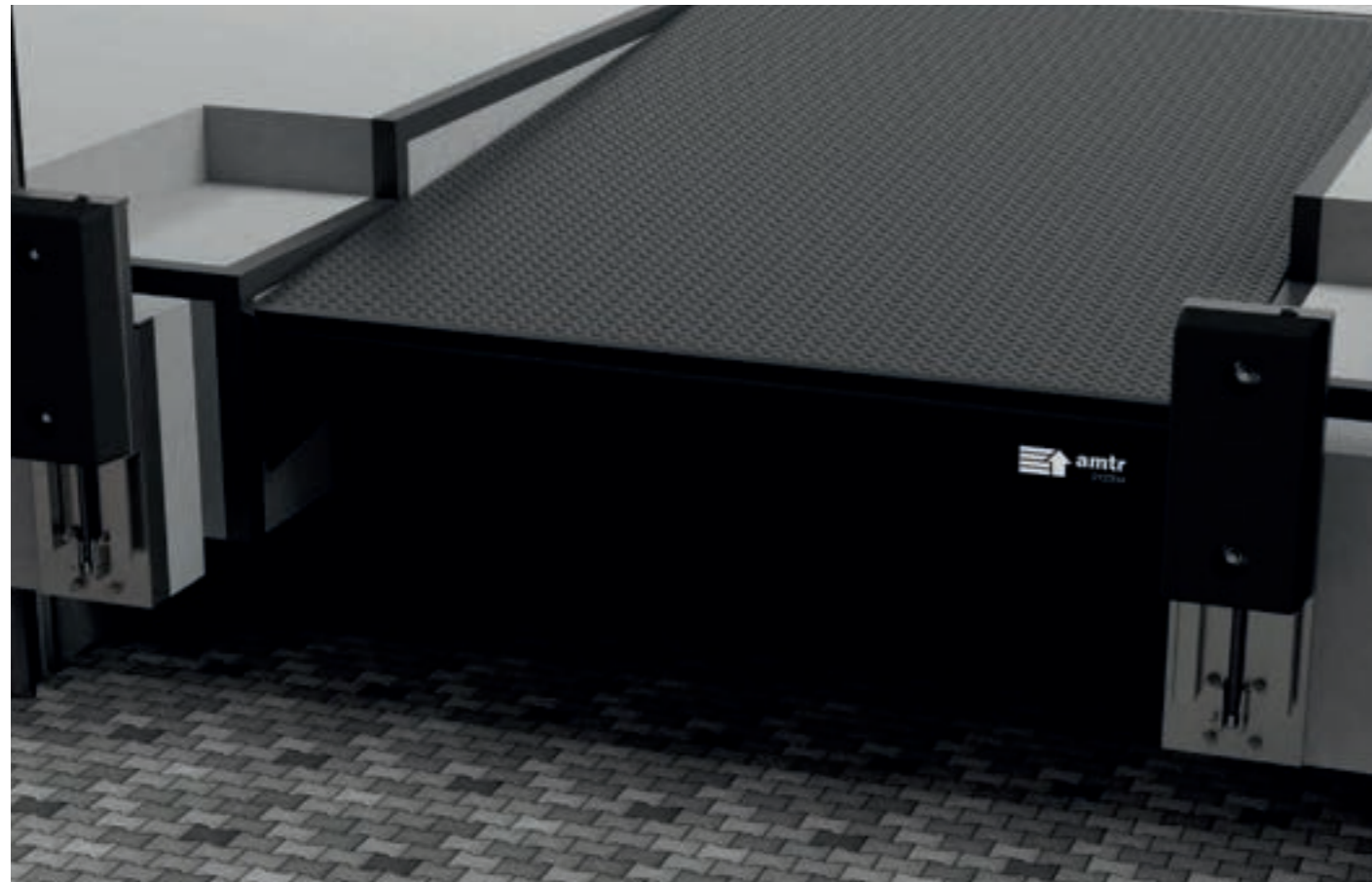
Loading docks with energy saving system



More information on the product

## Purpose

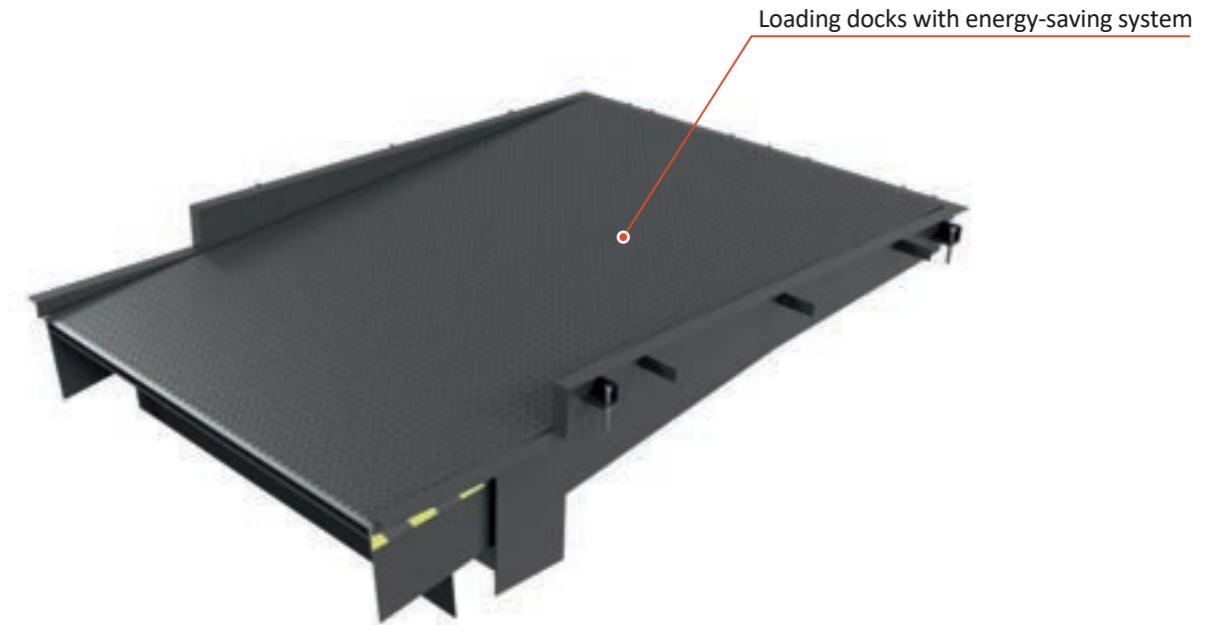
The ESS system is the ideal solution to ensure safety for the docking process as well as for the goods and the driver, who does not have to leave the vehicle directly in front of the dock to open the rear of the trailer. An additional advantage of the system is a significant reduction in costs associated with the loss of energy needed to heat or cool warehouses during loading, since the door opens after the vehicle is docked and sealed. The AMTRV ESS dock leveller is not only used for internal loading docks, but also for specially developed external loading bays with doors and seals, ideally suited for use in freezer warehouses. When at rest, the platform is lowered to level 0, allowing the doors of the truck to be opened after docking.



## Standard technical parameters\*

Application	Loading systems
Nominal lengths	2000, <b>2500</b> , 3000, 3500, mm
Nominal widths	<b>2000</b> , 2250 mm
Construction heights	710 mm
Nominal lip lengths	<b>500</b> /1000 mm
Sheet metal thickness	8/10 mm
Load capacity	<b>6</b> , 10, 12 ton ( <b>60</b> , 100, 120 kN)
Standard colors	RAL 9005 two-component resin-based paint

\*The product may be adapted according to customer requirements. The maximum platform inclination according to EN 1398 is 12.5%.



### Operating range(acc. to EN 1398)

	AMTRV-ESS (J500)				AMTRV-ESS (J1000)			
	2000	2500	3000	3500	2000	2500	3000	3500
Nominal length	2000	2500	3000	3500	2000	2500	3000	3500
Working range up	250	280	235	210	-	335	275	245
Working range down	345	410	390	365	-	470	440	405

## Types of lip

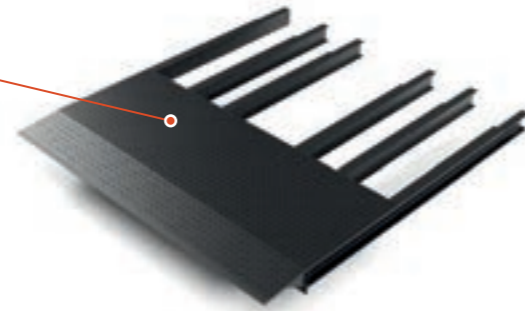
The AMTRV-ESS leveller lip is manufactured from 12 mm (12/14 mm) high quality riffled metal sheet with a robust, reliable and maintenance-free extending mechanism. The extension lip of the platform can be made in two different shapes: a straight lip and a diagonal lip.

### Straight lip

This standard version is designed to fit most types of vehicles with the most common sizes.

#### Features:

- ▶ the lip is made of 12 mm sheet metal,
- ▶ anti-slip surface,
- ▶ increased forklift traction,
- ▶ ergonomic and safe loading process.



### Bevelled lip

The symmetrically cut lip facilitates loading and reduces the risk of damage to the docked vehicle.



## Control

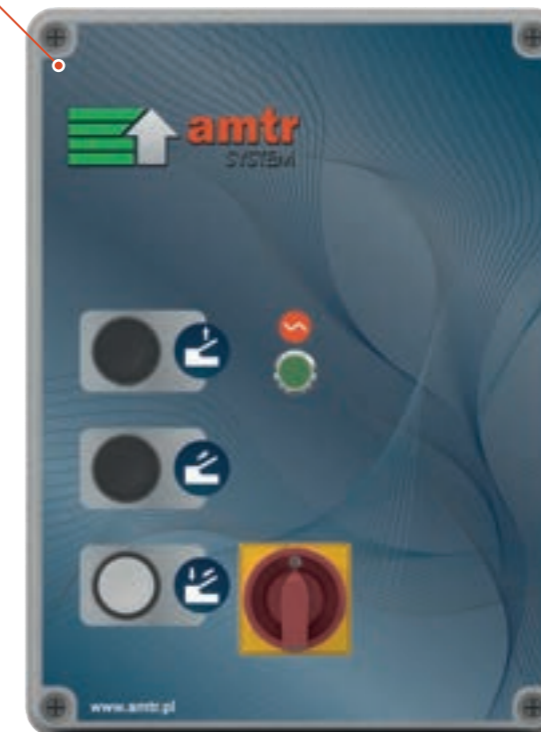
- ▶ the actuator system consists of a set of cylinders that allows independent extension of the lip,
- ▶ the lip is extended with a separate actuator,
- ▶ separately powered from the hydraulic unit,
- ▶ closed hydraulic system,
- ▶ stepless adjustment to the vehicle height during loading,
- ▶ the intuitive AMTRV-ESS control unit with a push button for auto-return can be combined with a door control unit.

Tank capacity	2,5 dm <sup>3</sup>
Working pressure	140 bar
Motor power	0,75 kW
Supply voltage	400 VAC
Control voltage	24 V DC
Protection type	IP54
Working medium	Mobil DTE 10 Excel 15

## AMTRV-ESS CONTROL

### TL301

auto - return



#### Optional features:

- ▶ Gate control
- ▶ UP control

## Standard equipment

- ▶ electrical system,
- ▶ hydraulic system,
- ▶ control box,
- ▶ triple divided lip,
- ▶ platform painted RAL 9005,
- ▶ CE conformity declaration.

## Additional options

- ▶ loading platform made in different dimensions,
- ▶ additional anti-slip layer of ramp driving elements,
- ▶ leveller structural elements painted in any RAL color or hot-dip galvanized,
- ▶ standard or reinforced bumpers with non-standard dimensions to absorb impacts,
- ▶ sealing in the event of an opening for a tail lift truck,
- ▶ powder coating.

## Safety devices

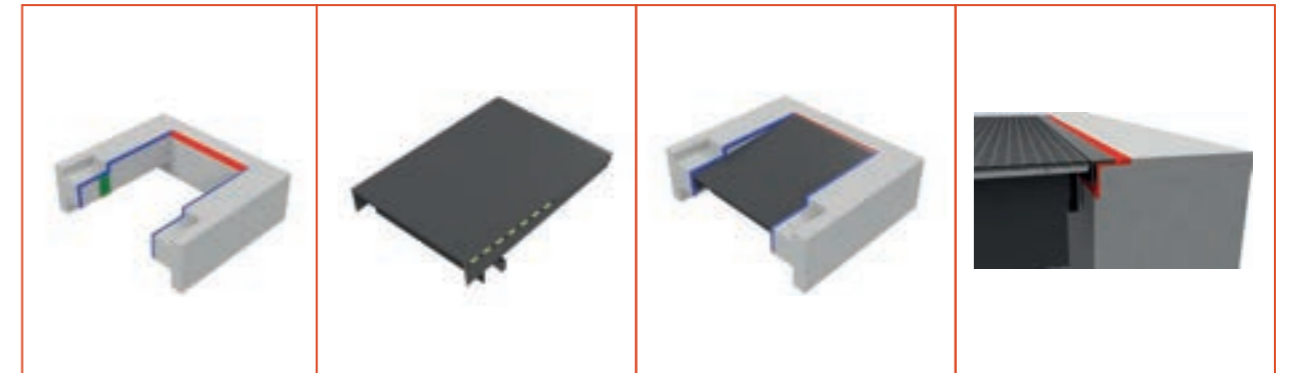
- ▶ protection in case of power failure or pressing of the emergency button (the platform will stop in its current position),
- ▶ black and yellow side marking of dangerous places,
- ▶ foot protection along the entire length of the platform.

## Dock frame system

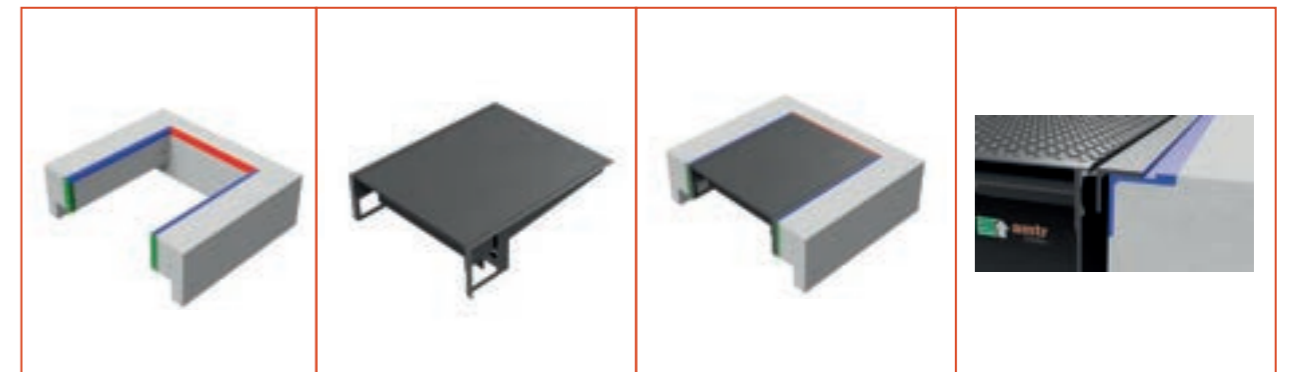
The main function of the dock frame is to connect the platform to the dock. The dock frame is directly cast in concrete.

## Dock pans (leveller installation)

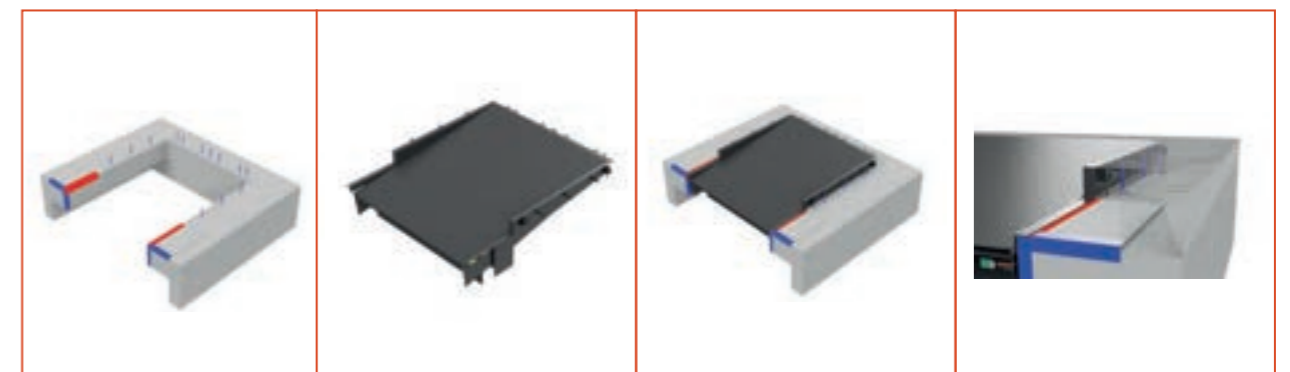
### Standard



### Frame



### Frame before concreting





— Thermal protection

— Easy installation

— Durability

# AMTR

Loading  
docks  
seals

# AMTR-U

## Standard seal



More information  
on the product

### Purpose

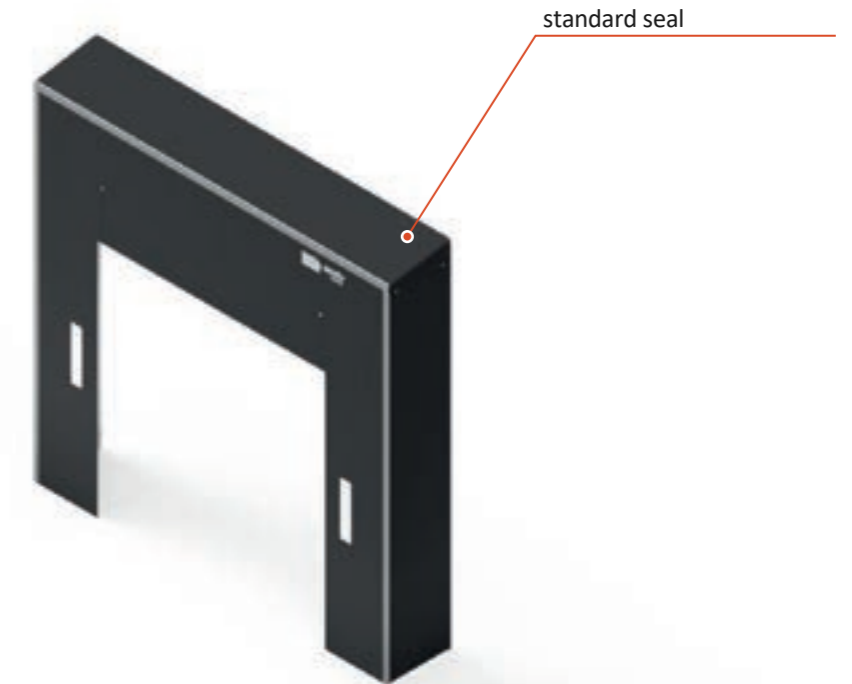
The AMTR-U mechanical seal is designed for sealing a truck trailer at a loading bay. Due to the integration of the dock leveller with the loading bay, no additional element is required to protect the loaded goods. The primary task of the seal is to reduce the impact of adverse weather conditions on warehouse operations. Model AMTR-PRO has universal dimensions for truck trailers. It is possible to design seals with non - standard dimensions.



### Standard technical parameters\*

Width	3400 mm
Height	3400 mm
Depth	600 mm
Top flap	1000 mm
Side flap	600 mm
Standard color	RAL 9005 two-component resin-based paint

\*The product may be adapted according to customer requirements.



### Features

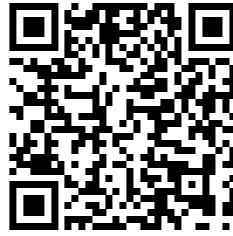
- ▶ the front tarpaulins (top and side) are made of 3 mm thick three layer PVC, resistant to weather and mechanical damage,
- ▶ the supporting structure of the seal consists of two frames articulated together by means of four arms endfabric,
- ▶ hot dip galvanized steel profiles,
- ▶ the edges of the seals are protected with aluminum profiles,
- ▶ the whole protected with a sloping roof that rises up under pressure from the front,
- ▶ the seal is marked with a warning yellow color on the front tarpaulins.

### Gate seal

The gate seal is a hanging galvanized steel structure encased with fabric. The sealing elements are approx. 3 mm thick, additionally reinforced with several layers of polyester fiber and covered with PVC on both sides.

# AMTR-P

## Inflatable seal



More information on the product

### Purpose

The AMTR-P inflatable dock seal is the most effective and durable of all dock seals. The construction of the air pockets harmonica shaped to create an optimal seal. Therefore, this type of sealing is particularly suitable for large temperature differences between inside and outside, for example in air-conditioned or refrigerated storage areas. It is possible to design seals with non-standard dimensions.

### Features

- ▶ the AMTR-P inflatable seal is made of durable and weather-resistant components, the air pockets are made of polyester interlacing covered with PVC on both sides,
- ▶ flexible and extremely stable protective belts, made of 3500 gr/m<sup>2</sup> double-layer interlaced polyester,
- ▶ the seal is covered on both sides with abrasion-resistant, anti-static, hard PVC coating,
- ▶ the front of the seal is made of galvanized steel, finished with a synthetic coating in grey (RAL 7042),
- ▶ reinforcement profiles are made of anodized aluminum,
- ▶ the seal is equipped with hot-dip galvanized consoles to ensure complete safety.



### Standard technical parameters\*

Application	Loading systems
Height	3700 mm
Width	3500 mm
Construction depth	800 mm
Installation height	4700 mm
Cushion material	670 gr/m <sup>2</sup>
Side width of curtains (inflated)	600 mm
Height of top curtain (inflated)	1000 mm
Inflation time	approx. 30 sec.
Deflation time	approx. 40 sec.

\*The product may be adapted according to customer requirements.



### Control

Both the tubular and blower seal motor are operated with one button. When a truck is docking for unloading, the two motors seal the space between the open gate and the vehicle within 30 seconds.

### Drive

The upper seal is extended through the shaft of the tube motor. During expansion, a blower motor ensures that the air pockets are filled with air.

Maximum capacity	610 m <sup>3</sup> /h
Maximum compression	500 Pa
Noise	70 dB
Power consumption	240 W 50 Hz
Rotation speed	2100 [1/min]
Voltage	230 V
Weight	4 kg



— Mobility work

— Comfort

— Quick loading

# AMTR

Loading  
bridges  
and loading  
platforms

# AMTR-I

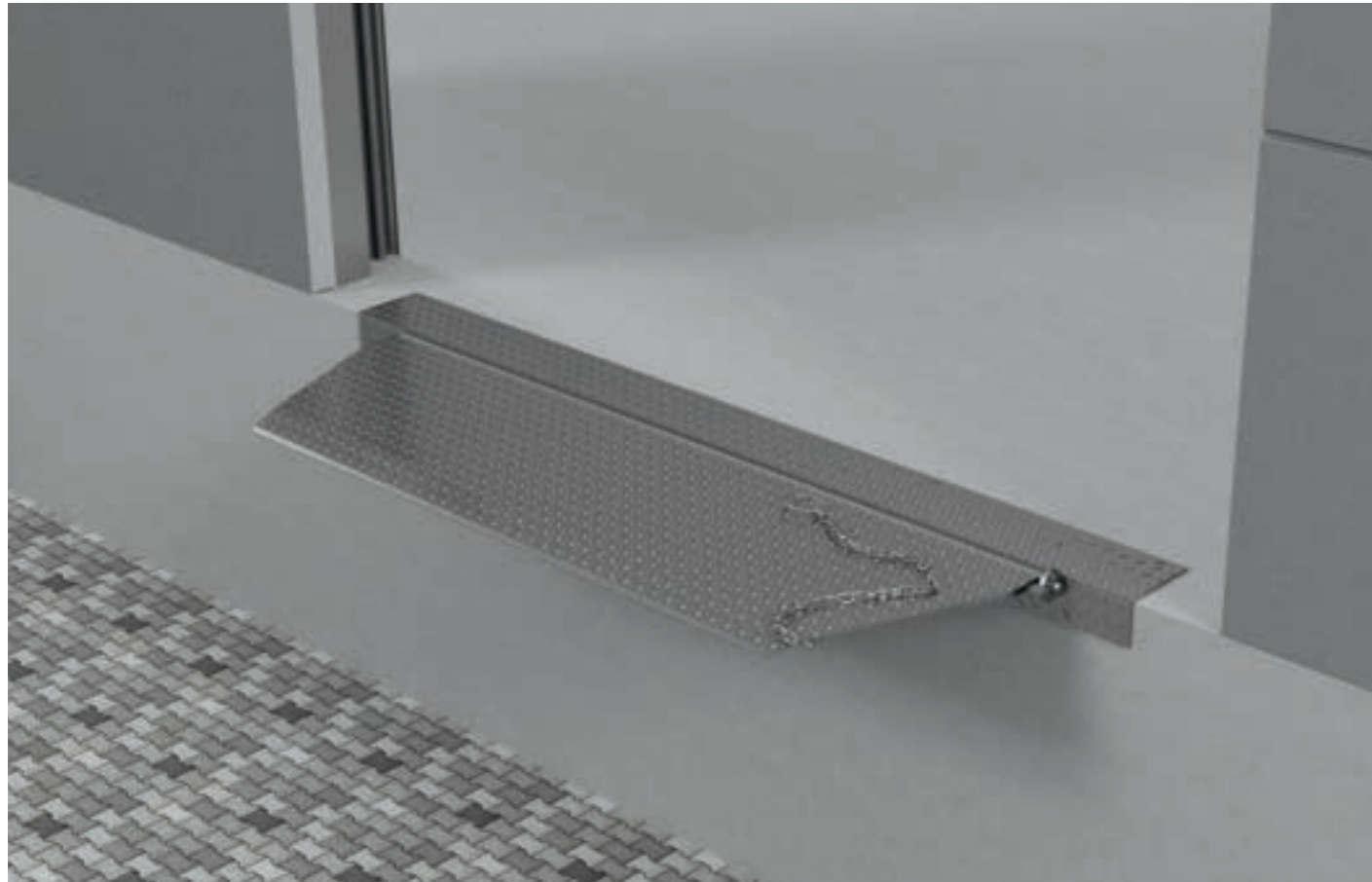
Loading plate - mechanical bridge



More information  
on the product

## Purpose

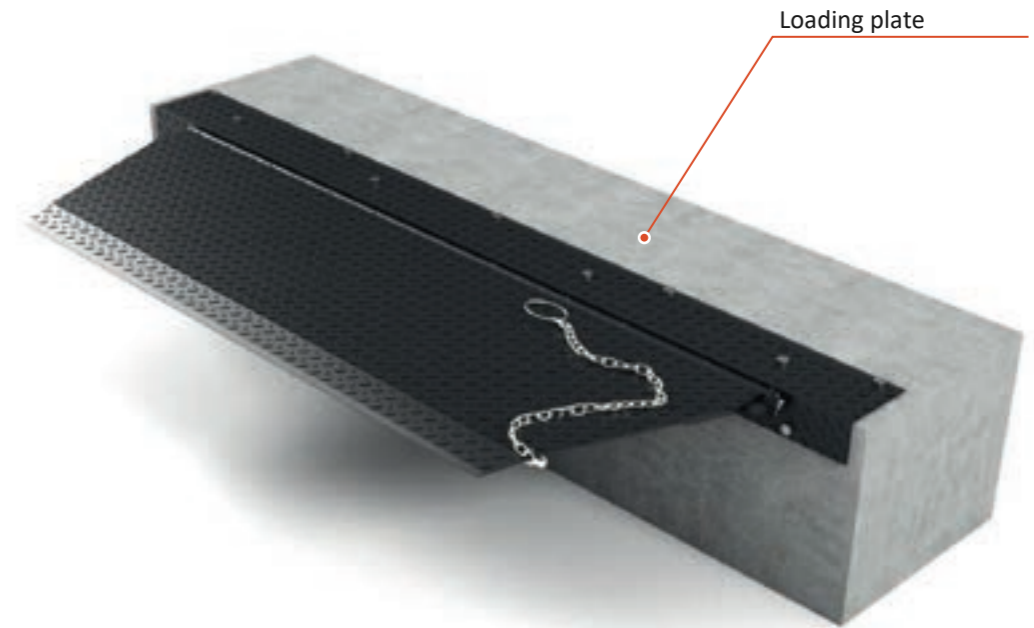
The AMTR-I mechanical bridge is designed for use in all types of industrial facilities where an additional docking system is required. It is primarily recommended for logistics facilities with continuous flow of goods.



## Standard technical parameters\*

Width	1200-2600 mm
Height	550-650 mm
Standard color	Zinc-plated

The product may be adapted according to customer requirements.



## Features

- ▶ mechanical bridge is made of galvanized steel elements,
- ▶ footbridge is 6 kN,
- ▶ the platform is opened/closed by driving the platform plate with a lever,
- ▶ the operation range of the footbridge is restricted by appropriate safeguards which protect the bridge plate against breaking,
- ▶ a supporting steel angle with a vertical flap is fixed to the end of the platform (edge of dock frame),
- ▶ steel plates of the bridge are protected with hot dip zinc coating.

# AMTR-J

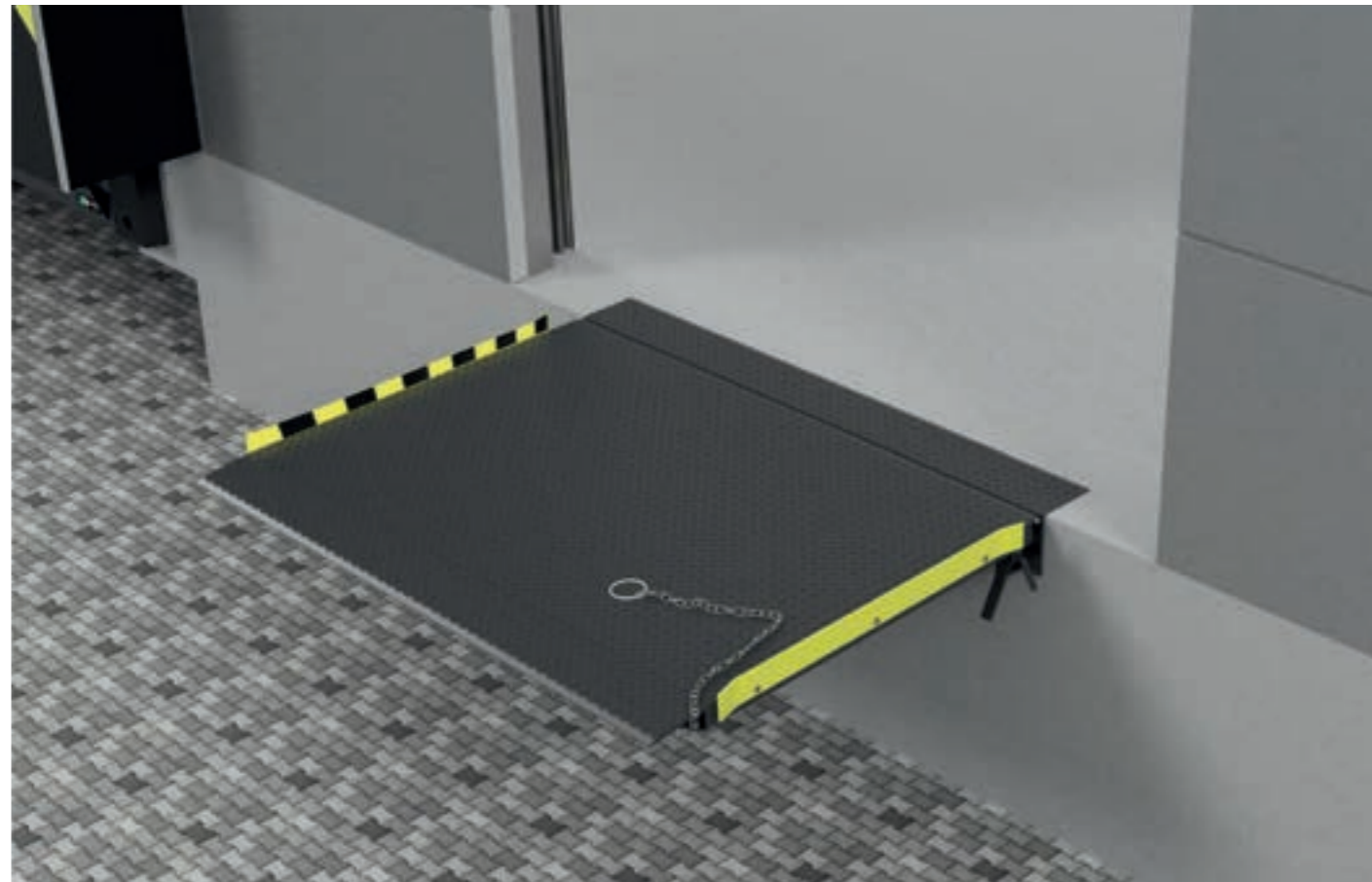
Loading plate - mechanical bridge



More information on the product

## Purpose

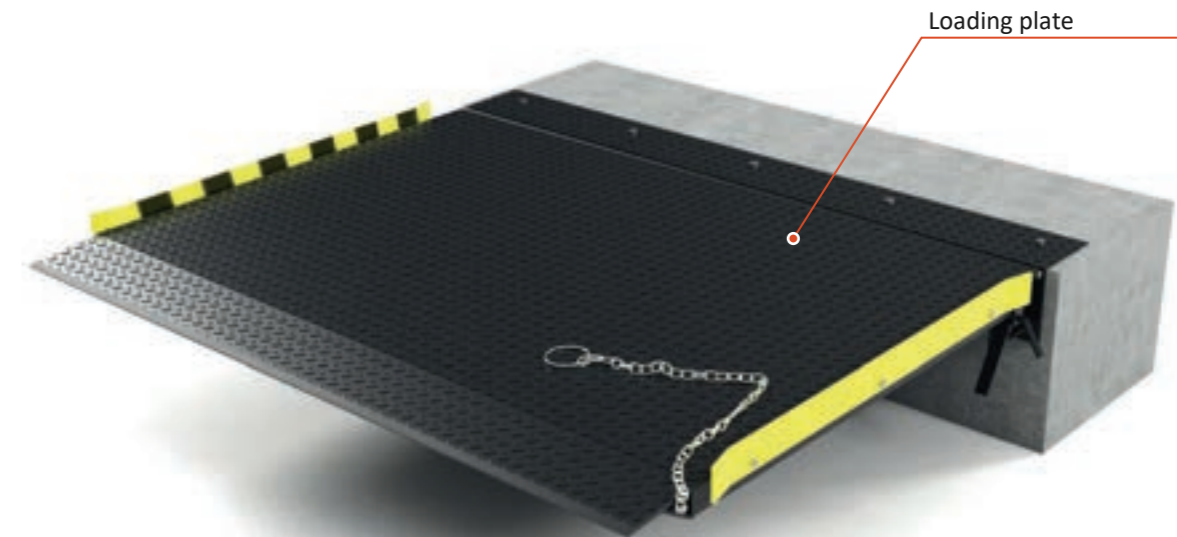
The AMTR-J mechanical bridge is designed for use in all types of industrial facilities where an additional docking system is required.



## Standard technical parameters\*

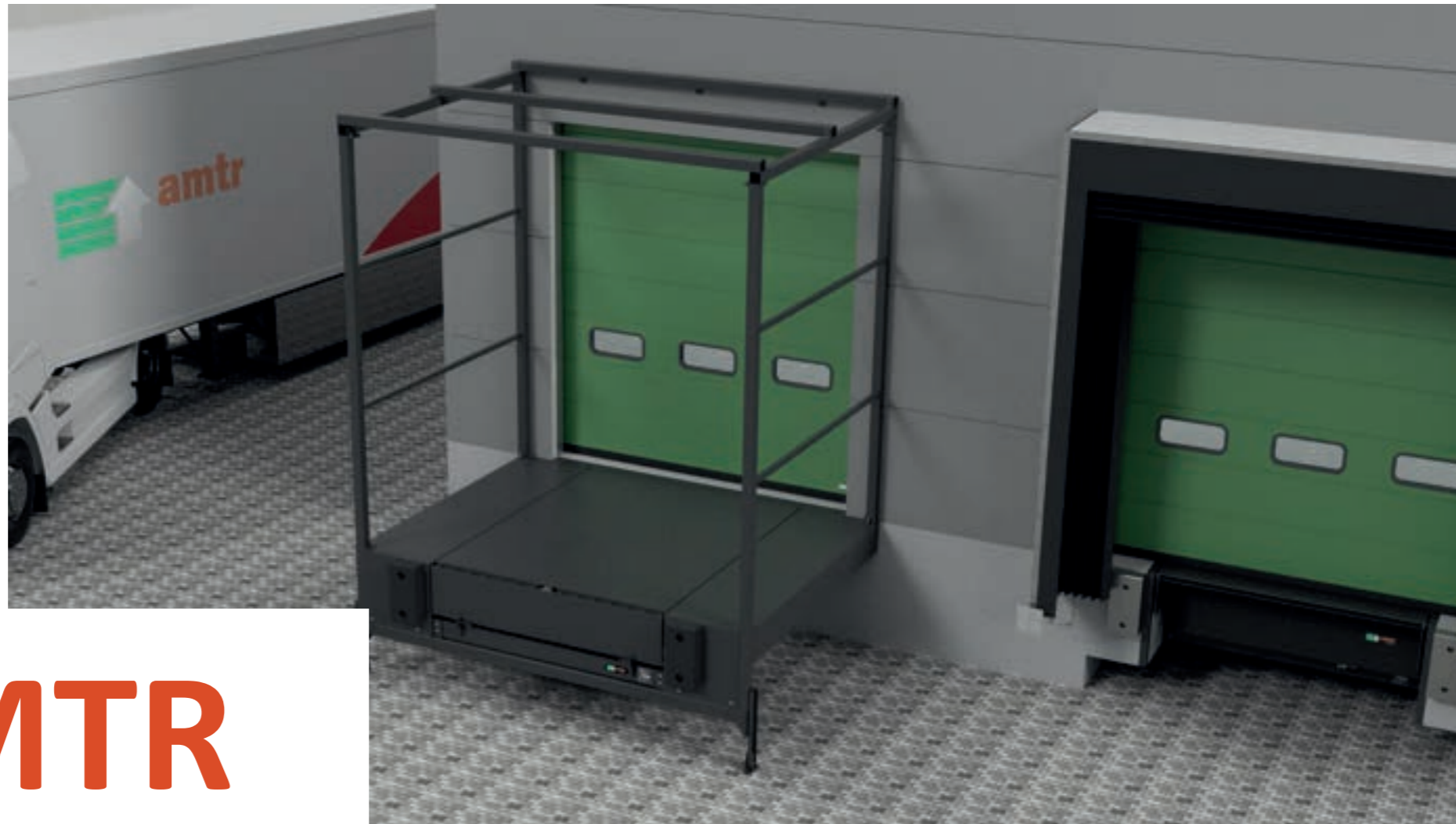
AMTR-J 1000x1500	Width 1000 mm   Length 1500 mm
AMTR-J 1500x1000	Width 1500 mm   Length 1000 mm
AMTR-J 1500x1200	Width 1500 mm   Length 1200 mm
AMTR-J 1500x1500	Width 1500 mm   Length 1500 mm
AMTR-J 2000x1200	Width 2000 mm   Length 1200 mm
AMTR-J 2000x1500	Width 2000 mm   Length 1500 mm
Standard color	RAL 9005 two-component resin-based paint

\*The product may be adapted according to customer requirements.



## Features

- ▶ the crossing plate is made of steel sheet,
- ▶ the frame which is the backbone of the bridge is made of steel profiles,
- ▶ opening/closing of the platform is done by lever action, the platform's working range is blocked by safety devices, which protects the bridge against breaking,
- ▶ the weight of the bridge is balanced by a spring mechanism, which ensures that the bridge is launched with minimum energy consumption and prevents rapid descent.



Extra protection

Precision

Ergonomics

# AMTR

Modular  
loading  
houses

# AMTR-D

## Modular loading houses



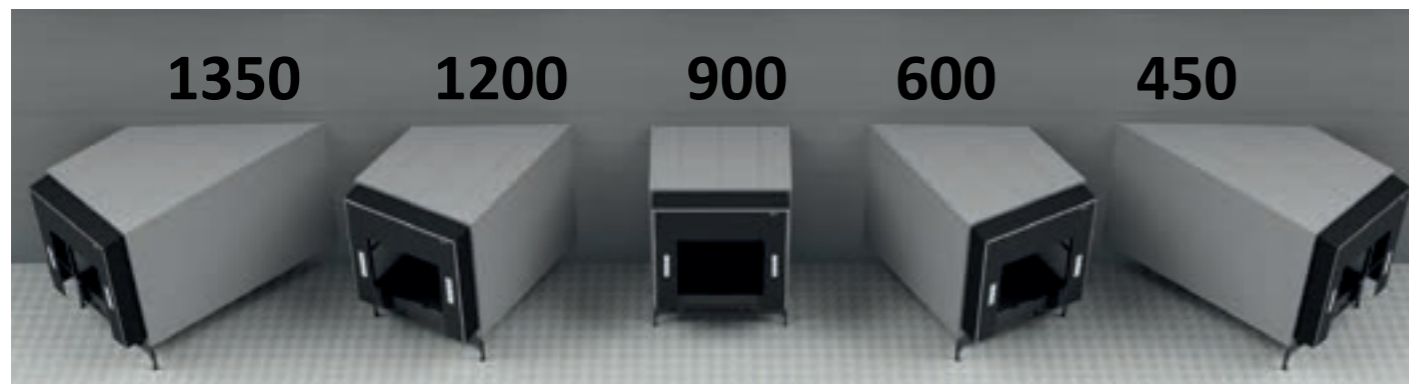
More information  
on the product

### PURPOSE

AMTR loading houses are an economical and ergonomic alternative to conventional loading bays inside a warehouse. This versatile solution can be used with all types of gates and seals. It is possible to adapt the loading house to different types of thermal insulation of the loading house, serial arrangement of several loading houses with common structural elements, or angled to the building. The loading houses are designed to equip new developments as well as retrofit existing facilities.

### FEATURES

AMTR-D PRO loading houses are an economical and ergonomic alternative to conventional loading bays inside a warehouse. The structure is assembled by bolting together ready made components, without welding. This versatile solution is applicable to all types of loading bridges and inflatable seals. It is possible to adapt the loading house to different types of thermal insulation of the loading house, to line up several loading houses with common structural elements, or to install at an angle at the building. The loading houses are designed to be installed with new investments as well as to modernize existing facilities. Loading houses also allow the use of loading platforms in the absence of the possibility of installation in the building. The AMT-D PRO loading house consists of a support frame with adjustable feet and a superstructure. It has two immovable side platforms covered with riffled 6/8 sheet metal. Integrated additional brackets allow for easy installa-on of any platform of your choice.



### Standard technical parameters\*

Application	Loading systems
Nominal lengths	2500, mm
Nominal widths	3400, mm
Construction heights	1065 - 1360 mm
Load capacity	6, 10 ton (60, 100 kN/m <sup>2</sup> )
Drainage	przez przednią krawędź
Maximum wind resistance	(Eurocode 3) 0,84 kN/m <sup>2</sup>
Maximum resistance to snow pressure	(Eurocode 3) 2,00 kN/m <sup>2</sup>
Standard color	RAL 9005 two-component resin-based paint

\*The product may be adapted according to customer requirements.



### Additional options

- ▶ the loading house can be customized according to the individual needs of the investment,
- ▶ the ensure structure or its individual elements can be painted in a non-standard RAL color or hot-dip zinc-plated,
- ▶ installation of the loading house at an angle of 30, 45, 60, 90, 120, 135, 150 degrees,
- ▶ whole range of regular or reinforced bumpers to cushion the impacts of docking vehicles,
- ▶ construction of house adapted to installation of standard or pneumatic seal,
- ▶ powder coating.



Details

Precision

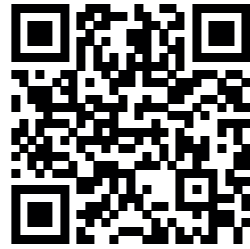
Quick loading

# AMTR

Accessories  
for levellers  
and docks

# AMTR-N

## Wheel Guides



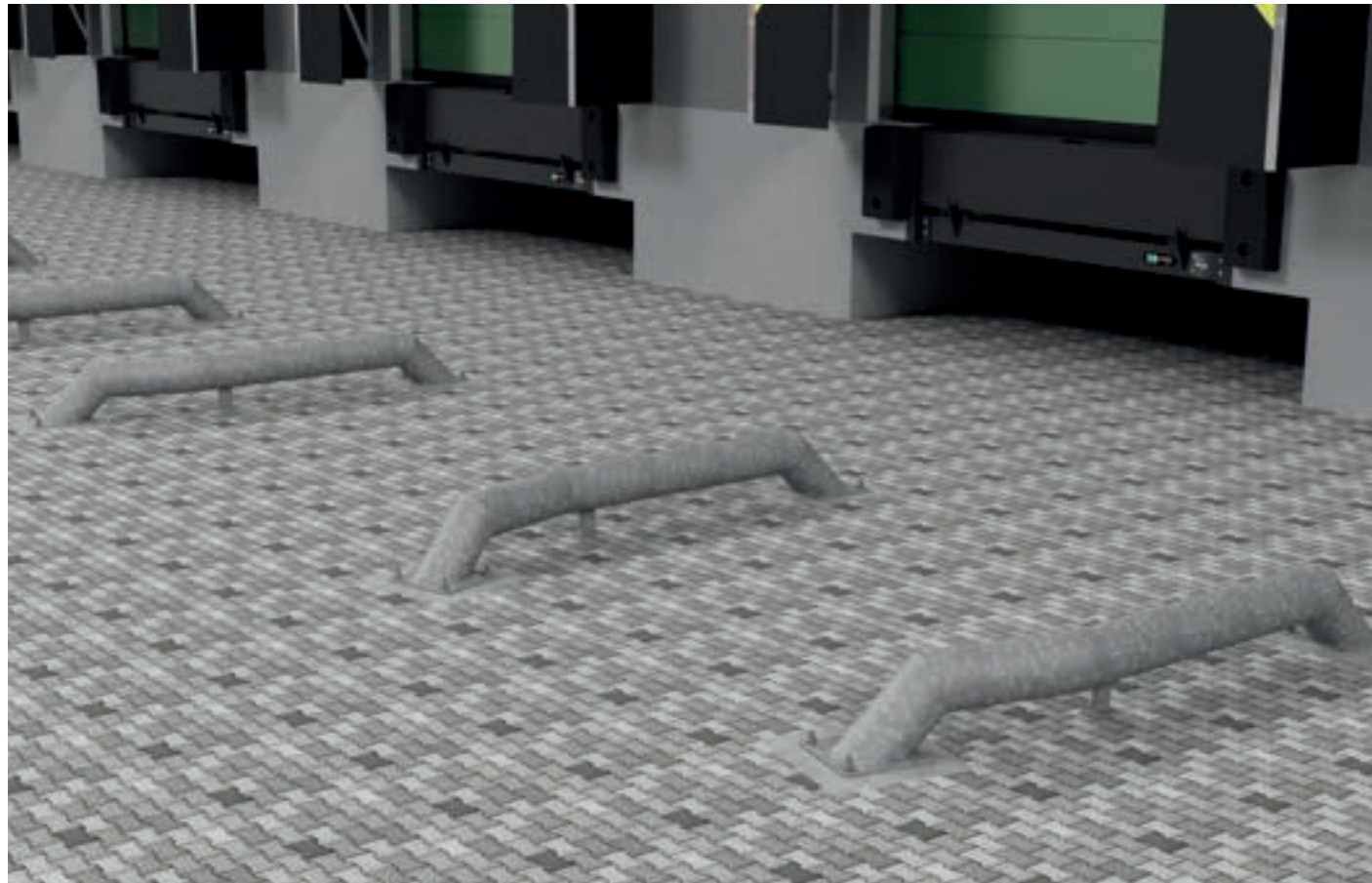
More information on the product

### Purpose

Guides are additional components of the loading system or the precise positioning of the vehicle in relation to the loading bay. This optimizes the handling process and helps avoid accidental damage to the docking system structure.

### Features

- ▶ the installation is extremely important in the proper functioning of the wheel guides,
- ▶ the wheel guide must be fixed in the ground in a permanent way by pouring a foundation for its brackets,
- ▶ the fixing ring anchors are included in the fixing kit.



## Types of wheels guides

### AMTR-N STRAIGHT guide

The AMTR-N STRAIGHT guide is approx. 1840 mm long. Its frame is made from a 160 mm diameter round steel profile. The structure is equipped with square mounting brackets made of flat sheet metal.



Application	Loading systems
Length	1840 mm
Height	250 mm
Bracket dimensions	250x250 mm
Tube diameter	159 mm
Finish	Zinc-plated

\*The product may be adapted according to customer requirements.

The set includes a right and angled wheel guide and amounting kit.

### AMTR-N ANGLED guide

The AMTR-N ANGLED guide is approximately 2000 mm long and opens at an angle of 15 degrees. Its frame is made of a 160 mm diameter round steel profile. The structure is equipped with square mounting brackets made of flat sheet metal.



Application	Loading systems
Length	2000 mm
Height	250 mm
Bracket dimension	250x250 mm
Tube diameter	159 mm
Finish	Zinc-plated + coating

\*The product may be adapted according to customer requirements.

The set includes a right and angled wheel guide and amounting kit.

# AMTR

## Bumpers



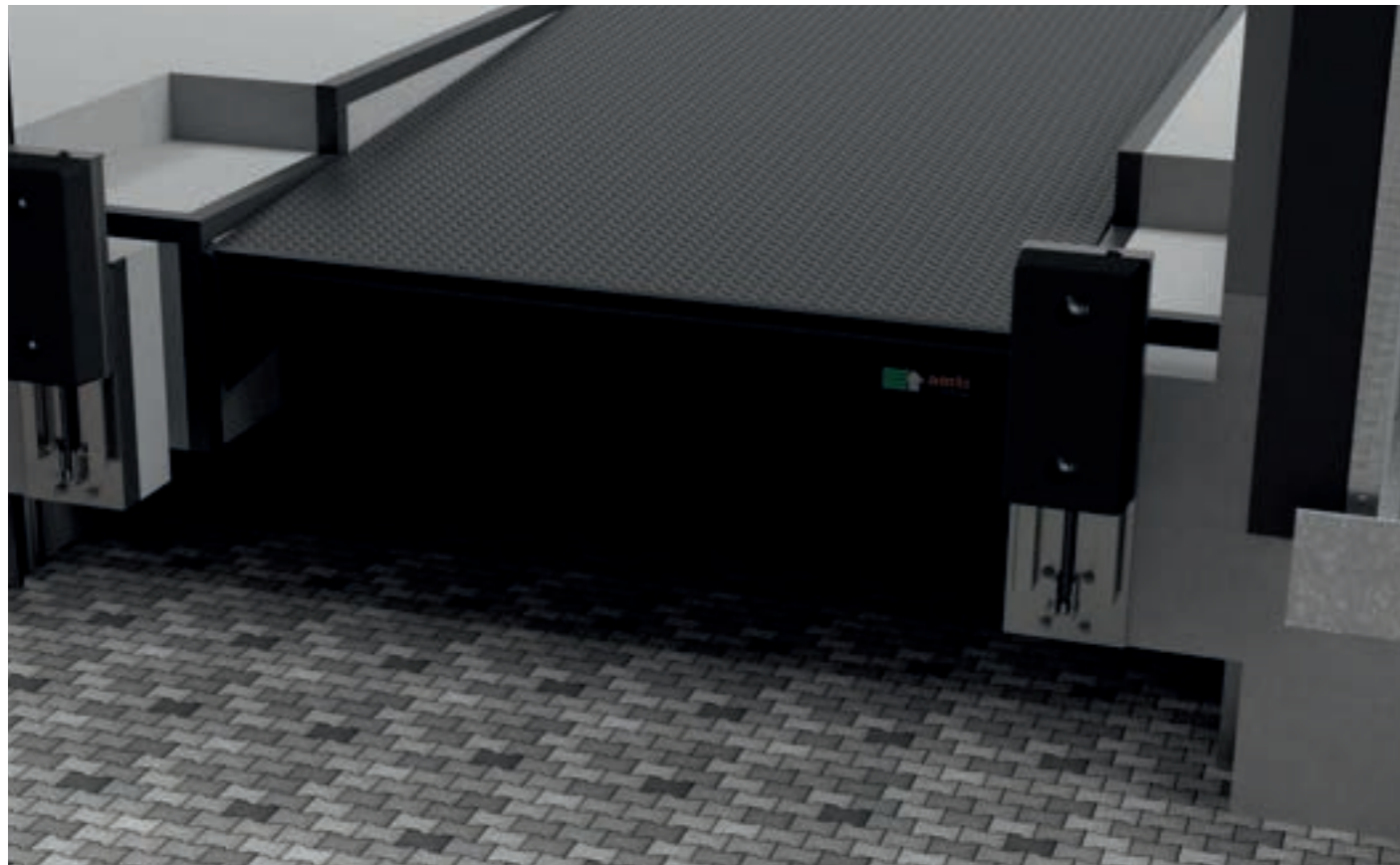
More information on the product

### Purpose

The basic function of the bumpers is to protect the loading system from direct contact with the docking vehicles. The ergonomic design of the bumper allows it to absorb the load during the docking process, providing a safe distance between the object and the approaching vehicle and preventing damage.

### Features

- ▶ the primary function of the bumper is to absorb the forces generated when a truck comes into contact with the loading bay,
- ▶ depending on the docking system, different types of bumpers can be selected to ensure the highest possible level of safety.



### Fixed bumper

#### Standard bumper

A standard size bumper with a design that ensures resilience for maximum safety when docking vehicles.

Dimensions	450x70x80 mm
Materials	high quality rubber
Installation	expansion anchors



#### JUMBO PRO bumper with bracket

JUMBO PRO bumper with steel bracket is fixed with steel anchors through the bracket plate. This type of mounting increases the bumper's strength and durability.

Dimensions	250x500x100mm
Materials	high quality rubber
Installation	expansion anchors
Brack	RAL 9005



#### JUMBO PRO bumper with bracket and front reinforcement

With this option, the front cover plate protects the bumper rubber from mechanical wear, extending the life of the bumper.

Dimensions	250x500x100mm
Materials	high quality rubber
Installation	expansion anchors



## Adjustable bumpers

### Adjustable bumper

The adjustable bumper is made of heavy duty rubber and a steel bracket containing the elements responsible for vertical movement. The bumper is equipped with a mechanism that allows the rubber to adjust to the vehicle level during loading/unloading.

<b>Dimensions</b>	510x250x152mm
<b>Materials</b>	rubber, steel, adjusting mechanism
<b>Installation</b>	expansion anchors
<b>Finish</b>	zinc-plated or painted

### Reinforced bumper

The reinforced bumper has been developed for customers who appreciate the highest strength and durability even under the most demanding conditions. Galvanic coating of the steel part provides weather resistance.

<b>Dimensions</b>	500x200x100mm
<b>Materials</b>	rubber, steel
<b>Installation</b>	expansion anchors
<b>Finish</b>	zinc-plated

### ESS bumper

The ESS bumper is made of heavy duty rubber and a steel bracket containing the components responsible for vertical movement. The bumper is equipped with a mechanism enabling it to be extended to a height of 250mm.

<b>Dimensions</b>	250x500x100 mm
<b>Materials</b>	rubber, steel
<b>Installation</b>	expansion anchors



# AMTR-S

## Steel bollards



More information  
on the product

## Purpose

The primary function of heavy duty bollards is to protect loading and unloading areas, doors, walls and everything in their vicinity. Suitable for heavy loads and work area protection.

## Features

- ▶ as standard they are galvanized and powder coated in RAL 1023 color,
- ▶ optionally they can be painted with two black 100 mm wide stripes,
- ▶ all bumpers are delivered with mounting kit.



## Types of bollards

### AMTR-S M1 bollard

A model with a diameter of 134 mm and wall thickness of 4 mm. It is a suitable solution for the use with dry trailer vehicles. This type of bollard works well near walkways and openings at ramps or gates.

<b>AMTR-S-800-M1</b>	Nominal height 800 mm   Diameter 134 mm   Wall thickness 3,2 mm
<b>AMTR-S-1000-M1</b>	Nominal height 1000 mm   Diameter 134 mm   Wall thickness 3,2 mm
<b>AMTR-S-1200-M1</b>	Nominal height 1200 mm   Diameter 134 mm   Wall thickness 3,2 mm
<b>AMTR-S-1500-M1</b>	Nominal height 1500 mm   Diameter 134 mm   Wall thickness 3,2 mm



### AMTR-S M2 bollard

A model with a diameter of 159 mm and wall thickness of 4.5 mm. It is a suitable solution for protection against forklifts. This type of bollard works well near openings where loading bays are used.

<b>AMTR-S-800-M2</b>	Nominal height 800 mm   Diameter 159 mm   Wall thickness 4 mm
<b>AMTR-S-1000-M2</b>	Nominal height 1000 mm   Diameter 159 mm   Wall thickness 4 mm
<b>AMTR-S-1200-M2</b>	Nominal height 1200 mm   Diameter 159 mm   Wall thickness 4 mm
<b>AMTR-S-1500-M2</b>	Nominal height 1500 mm   Diameter 159 mm   Wall thickness 4 mm



### AMTR-S M3 bollards

A model with a diameter of 219 mm and wall thickness of 5 mm. It is suitable for cars gates into buildings. This type of bollard works well near openings where loading bays are not used.

<b>AMTR-S-800-M3</b>	Nominal height 800 mm   Diameter 219 mm   Wall thickness 5 mm
<b>AMTR-S-1000-M3</b>	Nominal height 1000 mm   Diameter 219 mm   Wall thickness 5 mm
<b>AMTR-S-1200-M3</b>	Nominal height 1200 mm   Diameter 219 mm   Wall thickness 5 mm
<b>AMTR-S-1500-M3</b>	Nominal height 1500 mm   Diameter 219 mm   Wall thickness 5 mm



## Types of barriers

### AMTR-O1 standard barrier

Standard barrier brackets have a thickness of 8 mm. The standard barrier is used to protect walls and passageways in warehouses and underground parking lots.



<b>AMTR-O1-800-M2</b>	Height 800 mm
<b>AMTR-O1-1000-M2</b>	Height 1000 mm

\*The product may be adapted according to customer requirements.

### AMTR-B1 Industrial barrier

Standard industrial barrier brackets are 8 mm thick. The barrier is used to protect the walls and passageways wherever the regular barrier proves insufficient, including in warehouses and underground parking lots.



<b>AMTR-B1-800-M2</b>	Height 800 mm
<b>AMTR-B1-1000-M2</b>	Height 1000 mm

\*The product may be adapted according to customer requirements.

# AMTR-K

## Wheel chock



More information on the product

### Purpose

The basic function of the safety chock is to protect the loading operation of the vehicle by placing them against the wheels of the vehicle.

### Features

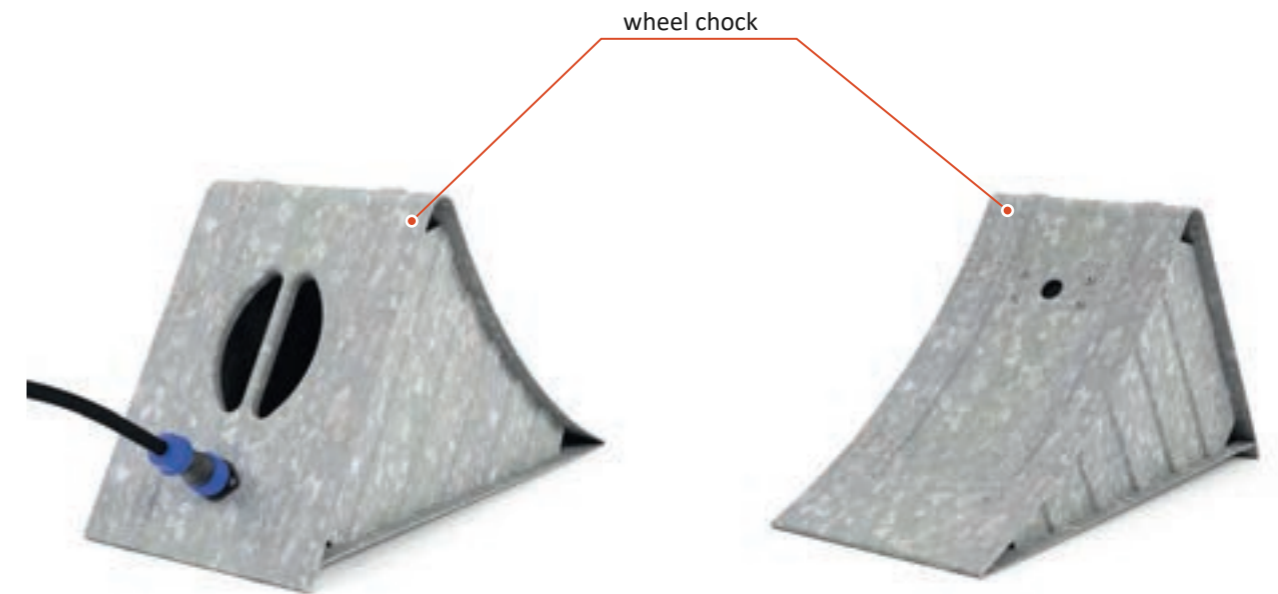
- ▶ wheel chocks can be used together with other dock accessories: dock control panel, industrial gates and traffic lights,
- ▶ they are extremely durable and equipped with a sensor to detect the truck wheel when the chock is placed.



### Standard technical parameters\*

Application	Loading systems
Length	470 mm
Width	200 mm
Height	230 mm
Radius	560 mm
Wheel load per chock	6500 kg
Material	galvanized steel
Weight	4,5 kg

\*The product may be adapted according to customer requirements.



#### AMTR-K wheel chock

The AMTR-K wheel chock secures vehicles against accidental rolling. By placing it against the wheels of the vehicle, safety during loading is increased and it can be used together with the ZSD system (Proximity Docking System). It is a galvanized steel chock with a radius of curvature of 560.



Comfort

Safety

Security

# AMTR

Lighting  
and docking  
system

# AMTR

## LED Dock Light



More information  
on the product

### Purpose

Dock lights are energy efficient replacements for outdoor halogen lights. They are IP65 rated, meaning full protection from dust and water, so they can be used in harsh storage environments.

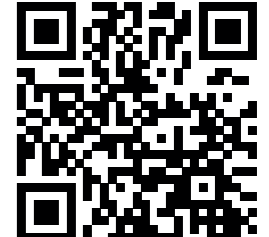
### Standard technical parameters\*

Lamp power	10 W
Power supply	AC 230 V
Power consumption	10 W
Light color	Ciepła
Lighting angle	120 stopni
Dimensions	75x115x85
Lifetime	30 000 h
Cycles	50 000
Starting time	1,1 s
Lamp power factor	> 0,5



# AMTR-ZSD

## Proximity Docking System



More information  
on the product

### Purpose

The proximity docking system is an electronic system based on a proximity sensor connected to traffic lights that improves the logistics of loading/unloading and improves safety. It allows for efficient cargo handling and assists drivers in docking of their vehicles. The system automatically informs the driver of the docked vehicle and the operating personnel inside the dock that the vehicle is ready for operation.




### Features

- ▶ external lights inform the driver of the distance to the dock, and internal lights inform that the vehicle is at the dock and operation may begin,
- ▶ the signaling system is based on a proximity sensor that is mounted at the front of the platform and signal lights (red and green) located outside and inside the dock.



# AMTR-ZSD V1 Docking System

ZSD V1 signaling light system is based on a proximity sensor, external signalization consisting of green and red light informing the driver about reaching designated place and necessity of stopping the vehicle.

STAGE	DESCRIPTION OF ACTIVITY	EXTERNAL LIGHT	INTERNAL LIGHT
1	Dock is free - ready for docking		
2	The vehicle has arrived at the designated location*		
3	Closing the gate at the end of vehicle operation		
4	Vehicle departure from the dock		

\* If vehicle operation does not begin within 3 minutes after docking of the vehicle, the program automatically proceeds to step 3.

## Technical data

Application	Loading systems
Power supply	230 VAC
Sensor type	Ultrasonic PNP
Adjustable sensor range	10 – 1000 mm
Lamp power	40 W
Protection rating	IP67















### The kit includes:

- ▶ box proximity,
- ▶ sensor,
- ▶ signal light with red and green light installation,
- ▶ cable set.



# Docking system AMTR-ZSD V3 (Light Guidance)

The ZSD V3 system is based on a system of LED lights to assist the driver because they are positioned at the optimum height for the driver so that he does not have to constantly observe both the position of the wheels in relation to the wheel guides and the distance from the dock wall. The use of ZSD V3 allows the complete elimination of traditional guiding systems, this provides more space in the yard without obstacles, which makes the removal of snow easier in winter conditions. The ZSD V3 system features long life and low power consumption.

SITUATION	EXTERNAL LIGHT	INTERNAL LIGHT
No truck		
Truck docked		
Opening the gate		
Loading/Unloading		
Closing the gate		
After pressing the button		
Truck departed		

Flashing light



## Technical data

Application	Loading systems
Power supply	230 VAC
Sensor type	Reflective PNP
Sensor range	10 – 1000 mm
LED strip	0,7 W
Protection rating	IP67

### The kit includes:

- ▶ control box
- ▶ reflective sensor
- ▶ sensor holder
- ▶ LED strip white - 2 pcs.
- ▶ LED strip - 1 pc.
- ▶ installation cable set





”  
*With us, you will build  
your Logistics center  
without compromises*

”





---

**AMTR System Sp. z o.o.**

ul. Kolejowa 44,

57-240 Kamieniec Ząbkowicki

**tel. +48 728 668 501**

**e-mail: [biuro@amtr.pl](mailto:biuro@amtr.pl)**

**[www.amtr.pl](http://www.amtr.pl) | [www.e-amtr.pl](http://www.e-amtr.pl)**

---

